

PROGRAM GUIDE

APRIL - AUGUST 2022



PLAY

AN EXTENSION OF YOUR OWN BACKYARD...



OFFICE INFORMATION



Hello Friends! Our dedicated Parks and Recreation Team sets out every day to provide guests with a clean, beautiful and safe experience in the parks. With all they do, our parks would be nothing without you! I hope this summer you continue to take an active role of support by participating in activities, swimming at the aquatic facilities, playing tennis, taking a walk, having a picnic or just letting your inner kid out to play. If you're as passionate about the well-being of parks as we are, please help by picking up a piece of trash, reporting graffiti and other concerns, and contacting the Administration Office for opportunities to volunteer or Adopt-a-Park (see page 35 for more information).

While perusing through this edition of the PLAY Brochure, we hope you enjoy the Did You Know facts, Connections articles and Staff Spotlights. Each of these features link together the story of parks and recreation in St. Charles and highlights the excellence in everything we do. Personally, I am fortunate to belong to a Team who always goes the extra mile to enrich the lives of those within our community.

As always, it is our pleasure serving the St. Charles Community and we welcome any feedback to make parks and recreation the best they can be. Enjoy your summer and we'll see you in the Parks, an Extension of Your Own Backyard!

Maralee M. Britton,
DIRECTOR OF PARKS AND RECREATION

OUR MISSION

"The City of St. Charles Parks and Recreation Department provides parks, facilities and programs to enrich the quality of life for residents and visitors, while preserving green space for future generations to enjoy."

ADMINISTRATION OFFICE:

ADDRESS: 1900 Randolph, St. Charles, MO 63301

HOURS: Monday - Friday: 8:00A - 5:00P

PHONE: (636) 949-3372

EMAIL: info@stcharlesparks.com

REGISTER BY: Mail, Phone, In Person or Online

Pre-registration is required unless otherwise stated.

Registrations and reservations will only be taken when accompanied with a form of payment.

RAINOUT LINE: (636) 944-6001

View the Rainout Line online or download the free app!

<http://rainoutline.com/search/dnis/6369446001>



The City of St. Charles, Missouri, fully complies with Title VI of the Civil Rights Act of 1964 and related statutes and regulations in all programs and activities. For more information, or to obtain a Title VI Complaint Form, please call the City Clerk's Office at (636)949-3282 or visit City Hall located at 200 North Second Street, St. Charles, Missouri, 63301.

PARKS & RECREATION BOARD MEMBERS

Mike Ryan	President
Patrick Caskey	Vice President
Denise Childress.....	Secretary
Tom Smith	Treasurer
Mike Hannegan.....	Member
Brad Harmon.....	Member
Kathy Mudrovic.....	Member
Tuss Peluchette.....	Member
Merle Schneider.....	Member

PARKS & RECREATION STAFF

Maralee Britton.....	Director of Parks & Recreation
Chris Atkinson.....	Asst. Director of Parks & Recreation
Tina Sieker.....	Administrative Coordinator
Don Borgmeyer.....	Enterprise Superintendent
Peter VanLinn III.....	Parks Superintendent
Mike Wilkins.....	Chief Ranger

PARKS BY THE NUMBERS

A LOOK AT THE CITY OF ST. CHARLES

PARKS AND RECREATION DEPARTMENT

BY THE NUMBERS • 2021



DID YOU KNOW?

The St. Charles Parks and Recreation Department is home to 26 parks, providing 820 acres of parkland space.

2,430 CONCRETE PARKING STOPS



277 ACRES OF MOWED TURF

34 SHELTERS & GAZEBOS

27 RESTROOMS



376 TOILET PAPER DISPENSERS
91 TOILETS
64 SINKS
34 URINALS

12.5 ACRES OF PLANTING BEDS



14 BRIDGES

2 ISA CERTIFIED STAFF ARBORISTS
INTERNATIONAL SOCIETY OF ARBORICULTURE

ADMINISTRATION OFFICE ASSISTED

17,704 PHONE CALLS

1,163 CELEBRATION RENTALS

844 PICNIC SHELTERS
270 COMMUNITY BUILDINGS
49 GARDEN, GAZEBO, STAGE



145,383 DAILY POOL ADMISSION

92,436 WAPELHORST
44,261 BLANCHETTE
8,686 MCNAIR

1,242 AQUATIC SEASON PASSES

711 FAMILY PASSES
198 INDIVIDUAL PASSES
333 LAP SWIM / RIVER WALK

11,188 PROGRAM PARTICIPANTS

3,687 YOUTH CAMPS
3,624 ADULT SPORTS
1,215 SPECIAL EVENTS
954 YOUTH SPORTS
918 TRIP TRAVELERS
458 ADULT FITNESS
332 YOUTH CULTURAL



17,091 PARK RANGER PATROLS

10,741 PARK PATROLS
6,350 FOOT PATROLS

148 MOTORCYCLE LICENSE ENDORSEMENTS OBTAINED



ST. CHARLES PARKS AND RECREATION FOUNDATION



99 DONATIONS

31 PERSONALIZED BRICK PAVERS
30 TREE DONATIONS
26 MEMORIAL BENCHES
12 PERSONALIZED FENCE SIGNS

137 VOLUNTEERS



710 HOURS VOLUNTEER



139,512 CONCESSION TRANSACTIONS

SERVED 17,297 SOFT PRETZELS
11,934 HOT DOGS
11,830 COOL BEADS
8,551 NACHOS
5,474 CHEESEBURGERS
5,405 POPCORN





AQUATIC SEASON

BLANCHETTE AQUATIC FACILITY

1900 RANDOLPH, ST. CHARLES, 63301

Rainout Line: (636)944-6001 ext. 14

Program Cancellation Rainout Line: (636)944-6001 ext. 17

ENTIRE COMPLEX SEASON	DAYS	TIME
May 28 - August 14	M - SU	11:00A - 7:00P

LAP SWIM SEASON

May 28 - September 5 (Mornings)	M - SU	6:00A - 10:45A
August 15 - September 2 (Evenings)	M - F	4:30P - 7:30P

MCNAIR AQUATIC FACILITY

3200 DROSTE ROAD, ST. CHARLES, 63301

Rainout Line: (636)944-6001 ext. 13

Program Cancellation Rainout Line: (636)944-6001 ext. 16

ENTIRE COMPLEX SEASON	DAYS	TIME
May 28 - August 7	M - SU	12:00P - 6:00P

WAPELHORST AQUATIC FACILITY

1875 MUEGGE ROAD, ST. CHARLES, 63303

Rainout Line: (636)944-6001 ext. 15

Program Cancellation Rainout Line: (636)944-6001 ext. 18

ENTIRE COMPLEX SEASON	DAYS	TIME
May 28 - August 21	M - SU	11:00A - 7:00P
August 27 - 28	S - SU	11:00A - 7:00P
September 3 - 5	S - M	11:00A - 7:00P

RIVER WALK SEASON

May 28 - September 5 (Mornings) - No morning River Walk on 7/22	M - SU	7:00A - 10:45A
May 30 - September 5 (Evenings) - No evening River Walk on 7/4	M - TH	7:30P - 9:00P

DID YOU KNOW?

Your purchase of a 32 oz Parks Souvenir Cup will get you soda refills for a reduced rate at the Blanchette and Wapelhorst Aquatic Facilities, St. Charles Soccer Complex and Wapelhorst Park concession stands. Get yours today!

ADMISSION

	BLANCHETTE		MCNAIR		WAPELHORST	
DAILY ADMISSION RATES	REGULAR	*PASSPORT	REGULAR	*PASSPORT	REGULAR	*PASSPORT
Adult <i>Ages 12 - Up</i>	\$9.50	\$7.50	\$6.00	\$5.00	\$10.00	\$8.00
Child/Senior <i>Child: Ages 3 - 11 Senior: Ages 60 - Up</i>	\$8.50	\$6.50	\$5.00	\$4.00	\$9.00	\$7.00
Ages 2 & Under	\$3.25	--	\$2.75	--	\$3.25	--
Lap Swim at Blanchette	\$5.00	--	--	--	--	--
River Walk at Wapelhorst	--	--	--	--	\$5.00	--
AFTER 4:00P RATES						
Adult <i>Ages 12 - Up</i>	\$8.50	\$6.50	\$5.00	\$4.00	\$9.00	\$7.00
Child/Senior <i>Child: Ages 3 - 11 Senior: Ages 60 - Up</i>	\$7.50	\$5.50	\$4.00	\$3.00	\$8.00	\$6.00
GROUP RATES	<i>Must have 20 or more people to qualify for group rates with a supervision ratio of one adult per five children.</i>					
Adult <i>Ages 12 - Up</i>	\$8.00	--	\$5.00	--	\$8.50	--
Child/Senior <i>Child: Ages 3 - 11 Senior: Ages 60 - Up</i>	\$7.00	--	\$4.00	--	\$7.50	--

*To learn more about Parks Passport Cards visit www.stcharlesparks.com/information/park-passport-card

AQUATIC SEASON

FAMILY FUN NIGHTS

Enjoy Sunday nights with your family at one of our three aquatic facilities at a reduced admission rate.

DATES	DAY	TIMES	FEE
BLANCHETTE AQUATIC FACILITY 1900 Randolph, St. Charles, 63301			
May 29 - August 14	SU	5:00P - 7:00P	\$5 per person
MCNAIR AQUATIC FACILITY 3200 Droste Road, St. Charles, 63301			
May 29 - August 7	SU	4:00P - 6:00P	\$3.25 per person
WAPELHORST AQUATIC FACILITY 1875 Muegge Road, St. Charles, 63303			
May 29 - September 4	SU	5:00P - 7:00P	\$5 per person

TINY TOT SWIM (AGES 6 & UNDER)

Looking for a special activity with your little ones before nap time? The kiddie pool is open before regular hours for children 6 and under with their parent/guardian.

DATES	DAYS	TIMES	FEE
BLANCHETTE AQUATIC FACILITY 1900 Randolph, St. Charles, 63301			
May 30 - August 12	M - F	9:00A - 10:45A	\$4 per person
WAPELHORST AQUATIC FACILITY 1875 Muegge Road, St. Charles, 63303			
May 30 - August 19	M - F	9:00A - 10:45A	\$4 per person

WIN A SEASON PASS

You could win a 2022 Aquatic Season Pass by simply entering our Parks Photo Contest. See page 17 to learn more about this exciting opportunity!



2022 AQUATIC PASSES

Get your pass to endless summertime fun! Aquatic Passes, excluding the fitness passes, can be used at all three Aquatic Facilities; Wapelhorst, Blanchette and McNair. Passes may be purchased by phone or in-person at the Administration Office in Blanchette Park. All passes need to be picked up from the Administration Office during regular business hours, M-F from 8:00A - 5:00P (excluding holidays, please see page 6 for the extended hours schedule).

Photos are required for season passes. If you are unable to bring everyone to the Administration Office to have their photo taken you can bring a clear portrait photo (i.e. school photo) with you instead. Use of a season pass by person(s) other than the person listed on the membership will result in cancellation of the pass.

SEASON PASSES	RATES	**LOYALTY RATE <i>Offer Ends Friday, April 29</i>
*Family Season Pass	Regular: \$310 City Resident: \$270	Regular: \$270 City Resident: \$230
Adult Season Pass <i>Ages 12 - Up</i>	Regular: \$145 City Resident: \$120	Regular: \$130 City Resident: \$105
Child Season Pass <i>Ages 3 - 11</i>	Regular: \$120 City Resident: \$105	Regular: \$105 City Resident: \$90
Senior Season Pass <i>Ages 60 - Up</i>	Regular: \$120 City Resident: \$105	Regular: \$105 City Resident: \$90

** Loyalty Member Rate is available to those who purchased a season pass in BOTH 2020 AND 2021. Families exceeding the 4 person maximum will be required to pay the set fee for additional family members of \$25 per person.

SEASON FITNESS PASSES	RATES
Lap Swim Pass	\$65
River Walk Pass - Morning	\$85
River Walk Pass - Evening	\$40
River Walk Pass - Morning & Evening	\$125
Lap Swim & River Walk Combo Pass <i>Includes both Morning and Evening River Walk hours</i>	\$150

10 SWIM PASSES	RATES
10 Swim Pass - Adult <i>Ages 12 - Up</i>	City Resident: \$65
10 Swim Pass - Child <i>Ages 3 - 11</i>	City Resident: \$55
10 Swim Pass - Senior <i>Ages 60 - Up</i>	City Resident: \$55

AQUATIC PASSES



AQUATIC RENTALS

PRIVATE POOL RENTALS

Looking for a unique place to host your next company, organization or personal event? The Aquatic Facilities are the perfect place for endless fun! **Prices are subject to change based on our Food and Beverage Policy.** Please see our website for more information.

www.stcharlesparks.com/aquatics/pool-parties-and-rentals/private-pool-rentals

BLANCHETTE AQUATIC FACILITY 1900 Randolph, St. Charles, 63301

2 1/2 hour rental between 7:30P - 10:00P

Entire Complex	F, S, SU	\$1,585
Activity & Kiddie Pool	F, S, SU	\$1,030
Lap Pool Only	F, S, SU	\$565

MCNAIR AQUATIC FACILITY 3200 Droste Road, St. Charles, 63301

2 1/2 hour rental between 6:30P - 10:00P

Entire Complex	F, S, SU	\$700
----------------	----------	-------

WAPELHORST AQUATIC FACILITY 1875 Muegge Road, St. Charles, 63303

2 1/2 hour rental between 7:30P - 10:00P

Entire Complex	F, S, SU	\$1,700
----------------	----------	---------

KIDDIE POOL RENTALS

1 1/2 hour rental between 9:00A - 10:30A

Available for children 6 and under with guardians

Blanchette Kiddie Pool	S, SU	\$285
Wapelhorst Kiddie Pool	S, SU	\$285

DID YOU KNOW?

Our three Aquatic Facilities hosted a total of 152 birthday parties and 22 private rentals during the 2021 Aquatic Season.



ADMINISTRATION OFFICE EXTENDED HOURS

In addition to our regular hours of operation (Monday - Friday from 8:00A - 5:00P), our Administration Office will have extended hours on select dates. This will provide more opportunities for you to stop by and purchase your 2022 Aquatic Season Pass or take care of any summer activity registrations. If you have any questions please give us a call at (636)949-3372. We hope to see you soon!

ADMINISTRATION OFFICE IN BLANCHETTE PARK 1900 Randolph, St. Charles, 63301

SATURDAY, MAY 21 FROM 9:00A - 12:00P

THURSDAY, MAY 26 FROM 5:00P - 7:00P

THURSDAY, JUNE 2 FROM 5:00P - 7:00P

SATURDAY, JUNE 11 FROM 9:00A - 12:00P

AQUATIC RENTALS

POOL PARTY PACKAGE

Let us help you make a splash for your next celebration! Whether you are hosting a birthday party, company outing, school gathering, troop picnic or any other special occasion our Aquatic Facilities will offer your guests an exciting and unique party experience. Pool Party Packages are available to be reserved at various times throughout the day, Monday - Sunday.

PACKAGE OPTIONS

PARTY PACKAGE A:

- 2 hour rental of shaded party area
- Admission into the Aquatic Facility for guests

PARTY PACKAGE B:

- 2 hour rental of shaded party area
- Admission into the Aquatic Facility for guests
- Lunch for guests (options below)
 - Option 1: Hotdog, Chips & Drink
 - Option 2: Pretzel with Cheese & Drink
 - Option 3 (Wapelhorst ONLY):
Slice of Cheese or Pepperoni Pizza & Drink

PARTY INFORMATION

Visit our website for additional information.

www.stcharlesparks.com/aquatics/pool-parties-and-rentals/pool-party-package

- Parties must be reserved at least 1 week prior to your reservation date.
- Party guests include both adults and children. All party attendees must be included in your count or pay admission to enter the facility regardless if they swim or not.
- Upon arrival, the party planner must provide the reservation receipt to receive wristbands for their guests. All guests must wear wristbands to gain entrance into the facility. Party planner is responsible for distributing wristbands at the entrance.
- Party planner and guests may enter the facility ahead of the reservation but only when the party planner arrives. Guests can stay after the reservation time but will need to move from the designated party area.
- No outside food or drinks may be brought in with the exception of dessert like a birthday cake.
- Food options for Party Package B must be selected at the time of making your reservation. Please contact the Aquatics Coordinator if additional food is needed in advance prior to your reservation date.
- Standard decorations (balloons, table cloths) are welcome. Party planner is responsible for setting up and taking down within their reservation time frame.
- If the facility must close due to inclement weather our Aquatics Coordinator will contact you to let you know that day and will discuss options of rescheduling or refunding. If your reservation was cut short due to inclement weather, you will receive a prorated refund dependent upon the length of the party and if food was served.

PRICING AND RENTAL TIMES

BLANCHETTE AQUATIC FACILITY 1900 Randolph, St. Charles, 63301

Each party pavilion holds a maximum of 40 guests. Party reservations must be made in groups of 20.

TIMES: 11:30A - 1:30P, 2:00P - 4:00P and 4:30P - 6:30P

PARTY PACKAGE PRICE	A	B
20 Guests & 1 Party Pavilion	\$200	\$320
40 Guests & 1 Party Pavilion	\$400	\$640

MCNAIR AQUATIC FACILITY 3200 Droste Road, St. Charles, 63301

Party pavilion holds a maximum of 20 guests.

TIMES: 12:00P - 2:00P, 2:00P - 4:00P and 4:00P - 6:00P

PARTY PACKAGE PRICE	A	B
20 Guests & Party Pavilion	\$140	\$235

WAPELHORST AQUATIC FACILITY 1875 Muegge Road, St. Charles, 63303

Each party pavilion holds a maximum of 20 guests. Party reservations must be made in groups of 20.

TIMES: 11:30A - 1:30P, 2:00P - 4:00P and 4:30P - 6:30P

PARTY PACKAGE PRICE	A	B
20 Guests & 1 Party Pavilion	\$210	\$330
40 Guests & 2 Party Pavilions	\$420	\$660
60 Guests & 3 Party Pavilions	\$630	\$990
80 Guests & 4 Party Pavilions	\$840	\$1,320





AQUATIC PROGRAMS

BLANCHETTE BARRACUDAS SWIM TEAM

Increase your swimming skills and have fun in friendly competition with the Blanchette Barracudas Swim Team. Compete in 6 meets with other teams throughout the county. Swimmers must be able to move themselves forward, unassisted, one length of the pool or 25 yards.

9 WEEK PROGRAM

FEE: \$165 PER PERSON

CODES	AGES	DATES	TIMES
BLANCHETTE AQUATIC FACILITY 1900 Randolph, St. Charles, 63301			
252201-01	5 - 18	5/31 - 7/28	6:30P - 9:30P
PRACTICE TIMES DEPEND ON SWIM TEAM LEVELS.			
Levels 1-2 (Ages 8 - under & new swimmers)		6:30P - 7:15P	
Levels 3-5 (Ages 9 - 12)		7:15P - 8:15P	
Levels 6-7 (Ages 13 - 18)		8:15P - 9:30P	

PARENT MEETING

Join the coaches at our parent meeting to learn more about the Blanchette Barracudas Swim Team.

TUESDAY, APRIL 26 AT 7:00P

Memorial Hall in Blanchette Park 1900 Randolph, St. Charles, 63301

BABY BUBBLERS INFANT SWIM

Baby Bubblers focuses on parent interaction with their child in the water. Early introduction and more time spent in the water will allow children to become acclimated with swimming before a potential fear develops. Every child will progress and develop at their own pace.

2 WEEK PROGRAM

FEE: \$50 PER CHILD

CODES	DAYS	DATES	TIMES
MCNAIR AQUATIC FACILITY 3200 Droste Road, St. Charles, 63301			
BABY BUBBLERS 1 (AGES 6 MONTHS - 18 MONTHS)			
252104-01	M & W	6/6 - 6/15	9:30A - 10:00A
252104-02	M & W	6/20 - 6/29	9:30A - 10:00A
252104-03	M & W	7/11 - 7/20	9:30A - 10:00A
252104-04	M & W	7/25 - 8/3	9:30A - 10:00A
BABY BUBBLERS 2 (AGES 18 MONTHS - 2 YEARS)			
252105-01	M & W	6/6 - 6/15	10:05A - 10:35A
252105-02	M & W	6/20 - 6/29	10:05A - 10:35A
252105-03	M & W	7/11 - 7/20	10:05A - 10:35A
252105-04	M & W	7/25 - 8/3	10:05A - 10:35A

JR. LIFEGUARD PROGRAM (AGES 13 - 15)

Have fun learning new skills that will help you become a future St. Charles Parks and Recreation Lifeguard. You will learn water rescues, CPR and more.

2 WEEK PROGRAM

FEE: \$65 PER PERSON

CODES	AGES	DAYS	DATES	TIMES
BLANCHETTE AQUATIC FACILITY 1900 Randolph, St. Charles, 63301				
252001-01	13-15	M - TH	6/20 - 6/30	7:30P - 8:30P

AQUATIC PROGRAMS

GROUP SWIM LESSONS

Group lessons have a staff ratio of 1 instructor for every 6 children. Below is a list of options for both Preschool and Youth Swim Lessons.

PRESCHOOL SWIM LESSONS (AGES 3 - 5)

For child participation without parents in the water. Basic safety and water adjustment skills are presented.

YOUTH SWIM LESSONS (AGES 6 - UP)

Children will be tested and placed into groups most suited to their level of experience on the first class.

FEE: \$75 PER PERSON

2 WEEK PROGRAM - TOTAL OF 8 CLASSES!

MONDAY - THURSDAY	TIMES
Blanchette	6/6 - 6/16
OR	6/20 - 6/30
Wapelhorst	7/11 - 7/21
	7/25 - 8/4
	9:05A - 9:35A
	9:40A - 10:10A
	10:15A - 10:45A
	7:30P - 8:00P (Blanchette Only)

4 WEEK PROGRAM - TOTAL OF 8 CLASSES!

MONDAY AND WEDNESDAY	TIME
Wapelhorst	6/6 - 6/29
	7/11 - 8/3
	7:30P - 8:00P
TUESDAY AND THURSDAY	TIME
Wapelhorst	6/7 - 6/30
	7/12 - 8/4
	7:30P - 8:00P

8 WEEK PROGRAM - TOTAL OF 8 CLASSES!

SATURDAY MORNINGS	TIMES
Wapelhorst	6/4 - 7/30
	No class 7/2
	9:30A - 10:00A
	10:10A - 10:40A

PRIVATE SWIM LESSONS (AGES 3 - UP)

One-on-one private lessons are available on a limited basis. From basic swimming skills to refining strokes and techniques, these lessons are tailored to meet each individual's goals and needs.

FEE: \$95 PER PERSON

1 WEEK SESSION - TOTAL OF 4 CLASSES!

MONDAY - THURSDAY	TIMES
McNair	6/6 - 6/9
	6/13 - 6/16
	6/20 - 6/23
	6/27 - 6/30
	7/11 - 7/14
	7/18 - 7/21
	7/25 - 7/28
	8/1 - 8/4
	9:30A - 10:00A
	10:05A - 10:35A
	10:40A - 11:10A
	11:15A - 11:45A

2 WEEK SESSION - TOTAL OF 4 CLASSES!

MONDAY AND WEDNESDAY	TIMES
Blanchette	6/6 - 6/15
OR	6/20 - 6/29
Wapelhorst	7/11 - 7/20
	7/25 - 8/3
	9:05A - 9:35A
	9:40A - 10:10A
	10:15A - 10:45A
	7:30P - 8:00P
TUESDAY AND THURSDAY	TIMES
Blanchette	6/7 - 6/16
OR	6/21 - 6/30
Wapelhorst	7/12 - 7/21
	7/26 - 8/4
	9:05A - 9:35A
	9:40A - 10:10A
	10:15A - 10:45A
	7:30P - 8:00P

4 WEEK SESSION - TOTAL OF 4 CLASSES!

SATURDAY MORNINGS	TIMES
Blanchette	6/4 - 6/25
OR	7/9 - 7/30
Wapelhorst	
	9:30A - 10:00A
	10:10A - 10:40A

DID YOU KNOW?

Learning to swim is the best way to stay safe in and around water and also reduces the chances of drowning. In 2021 our swim instructors taught 784 swim lesson participants important water safety skills and techniques all while having fun making a splash!



AQUATIC FITNESS

CARDIOWAVE

This class will introduce the fundamentals of working out on an unstable surface in the water utilizing our Glide Fit floating platforms. This class will help build strength while raising your heart rate in a fun way!

ONE DAY CLASS

FEE: \$12.50 PER PERSON

SATURDAY	TIME
Blanchette	6/4, 6/11, 6/18, 6/25 7/9, 7/16, 7/23, 7/30 8/6, 8/13, 8/20, 8/27
	8:00A - 9:00A

GLIDE FIT YOGA

This class will incorporate a variation of yoga poses while utilizing Glide Fit floating platforms. The combination of yoga poses and an unstable surface will provide a full body workout that will improve your balance and strengthen your core muscles.

ONE DAY CLASS

FEE: \$12.50 PER PERSON

SATURDAY	TIME
Blanchette	6/4, 6/11, 6/18, 6/25 7/9, 7/16, 7/23, 7/30 8/6, 8/13, 8/20, 8/27
	9:15A - 10:00A

AQUA CYCLING

This class combines the high intensity of a traditional spin class with the low impact of water. It is a great workout for those recovering from an injury or those looking for a different exercise experience.

Water shoes are required.

4 WEEK PROGRAM - TOTAL OF 4 CLASSES!

FEE: \$50 PER PERSON

SATURDAYS	TIME
McNair	6/4 - 6/25 7/9 - 7/30
Wapelhorst	8/6 - 8/27
	9:00A - 9:45A

4 WEEK PROGRAM - TOTAL OF 8 CLASSES!

FEE: \$100 PER PERSON

MONDAY AND WEDNESDAY	TIME
McNair	6/6 - 6/29 7/11 - 8/3
Wapelhorst	8/8 - 8/31
	8:00A - 8:45A 9:00A - 9:45A 7:30P - 8:15P
TUESDAY AND THURSDAY	TIME
McNair	6/7 - 6/30 7/12 - 8/4
Wapelhorst	8/9 - 9/1
	6:30P - 7:15P 7:30P - 8:15P 7:30P - 8:15P

DID YOU KNOW?

The Lazy River at the Wapelhorst Aquatic Facility is approximately 335 feet in length and takes about 16 laps to complete one mile.

AQUACIZE

Aquacize is a high impact water aerobics class that is geared toward those who prefer less choreography in their workouts but still enjoy intense cardiovascular fitness and toning. Hand and leg water weights will be used in this class. All equipment will be provided.

4 WEEK SESSION - TOTAL OF 8 CLASSES!

FEE: \$100 PER PERSON

MONDAY AND WEDNESDAY	TIMES
McNair	6/6 - 6/29 7/11 - 8/3
Wapelhorst	8/8 - 8/31
	6:30P - 7:30P 7:30P - 8:30P





AQUATIC INFORMATION

GENERAL INFORMATION

- See website for the slide height requirements of each facility.
- Coast Guard approved life jackets, noodles, water wings and rings no larger than 38 inches in diameter are allowed with adult supervision. Other floatation devices such as inner tubes and rafts are not permitted.
- Use of a season pass card by person(s) other than the person listed on the membership will result in cancellation of the pass.
- All three aquatic facilities have concession stands. Outside coolers, food, drinks or glass is prohibited.
- Guest must be 12 years or older to enter the aquatic facility without a guardian. Children 11 and younger must be accompanied by a guardian 14 years of age or older.
- All children still in diapers must wear a swim diaper provided by the Parks and Recreation Department due to health and safety issues.
- Guests with infectious conditions/contagious disease/open wounds will not be allowed entrance into the aquatic facility. No one will be allowed to enter water with open sores, apparent skin disease or any visible bodily fluid discharge. It is mandatory that diaper wearing guests wear special swimming diapers at all times while using the aquatic facility.

INCLEMENT WEATHER POLICY

Blanchette, McNair and Wapelhorst Aquatic Facilities will remain open except during threatening weather such as thunderstorms, lightning, tornadoes and/or low air/water temperatures. During periods of low attendance various attractions and/or pools within the aquatic facility may close.

RAIN CHECK POLICY

Rain checks will be issued when the pool has been cleared and has remained clear for at least 45 minutes after the manager on duty has made the announcement to exit the pools. After 45 minutes, guests can receive a rain check to visit the facility on a different day during the season. The aquatic facilities will remain open until the Aquatics Coordinator makes the decision to close for the day. Guests must present their time stamped receipt for all individuals wanting to receive a rain check. Guests requesting a rain check must have been in the facility for less than 3 hours to be eligible for a rain check. There are no cash refunds. Rain checks expire on the last day of the season.

For more information visit:

www.stcharlesparks.com/aquatics/778-2



SPECIAL EVENTS

BREAKFAST WITH BUNNY

The Easter Bunny will be hopping by St. Charles for the day and wants you to come visit. Enjoy a delicious hot breakfast, create some *egg*-cellent crafts and get your picture taken with the Easter Bunny. An egg hunt will also be available for those children registered. Don't forget your camera, there will be lots of special moments to capture during this event.

SATURDAY, APRIL 2

Memorial Hall in Blanchette Park 1900 Randolph, St. Charles, 63301

Breakfast begins at 9:00A

Fee: \$25 per person

All attending must pay, ages 2 and under are free.

ADULT EASTER EGG HUNT (AGES 21+)

Who said Easter Egg Hunts are just for kids? Gather your friends for some big kid fun! Each participant will be able to join the hunt for eggs and enjoy drinks with the company of their friends in the park. There will be a range of valuable prizes, as well as one grand prize winner! Register today before this event sells out.

FRIDAY, APRIL 15

Wapelhorst Park Concession Stand 1875 Muegge Road, St. Charles, 63303

Check-in at 7:30P | Start time at 8:00P

Fee: \$30 per person

Price includes admission and 2 tickets for draft beer or soda. Bring your own buckets and flashlights.

DID YOU KNOW?

We offer a variety of indoor and outdoor locations for organizations to host events. Whether it's a festival, race, school picnic, company meeting or luncheon, we have a space that will work to fit your needs. Start planning your event by giving us a call at (636)949-3372.

EARTH DAY YOGA - FREE

Get your weekend started right with some fitness fun! Join us in Frontier Park to celebrate Earth Day during our annual, complimentary yoga session lead by Blue Bird Yoga instructors.

FRIDAY, APRIL 22

Frontier Park 500 South Riverside Drive, St. Charles, 63301

Time: 12:00P - 1:00P

FREE for all ages and levels! Registration is required.

Bring a water bottle and exercise mat.



SPECIAL EVENTS

FOOD TRUCK SAVE THE DATES!

Enjoy dinner in the park and live music during our 2022 Food Truck Events! Bringing your own lawn chair or blanket is recommended. Alcoholic beverages or glass containers cannot be brought into these events, coolers are subject to be checked at the entrance. Please be aware that local laws prohibit domesticated animals, with the exception of service animals during Food Truck events.

TUESDAY, MAY 17 from 5:00P - 8:00P

Blanchette Park 1900 Randolph, St. Charles, 63301

TUESDAY, JUNE 21 from 5:00P - 8:00P

Frontier Park 500 South Riverside Drive, St. Charles, 63301

TUESDAY, AUGUST 16 from 5:00P - 8:00P

Blanchette Park 1900 Randolph, St. Charles, 63301

TUESDAY, OCTOBER 18 from 5:00P - 8:00P

Frontier Park 500 South Riverside Drive, St. Charles, 63301



POOL PAWS DOG SWIMS

Don't miss out on this PAW-some event! The St. Charles Parks and Recreation Department has teamed up with the Missouri Alliance for Animal Legislation for this annual, end-of-summer event! Your 4 legged friend will have a blast making a splash and playing with their canine friends! Check our website for event rules and information on what you will need to bring with you.

www.stcharlesparks.com/aquatics/aquatic-events/dog-swim

MONDAY, AUGUST 8 OR THURSDAY, AUGUST 11

McNair Aquatic Facility 3200 Droste Road, St. Charles, 63301

Time: 6:00P - 8:00P

Fees per date: \$12 per owner and dog

\$4 per additional guest

No registration required, payment taken at entrance.

DIVE-IN MOVIE NIGHTS

Get ready for some family fun at our Dive-In Movie events this summer at the Blanchette Aquatic Facility. The following movies were chosen based off of our social media poll that was done in January. Movie snacks and beverages will be available for purchase at the concession stand. No outside food or drinks allowed into these events. Register today before these popular movie nights sell out! Tickets must be purchased in advance.

FRIDAY, JULY 29

LUCA (rated PG)

Blanchette Aquatic Facility

1900 Randolph, St. Charles, 63301

Doors open at 7:30P

Movie starts at 8:15P

Fee: \$8.50 per person, all ages



FRIDAY, AUGUST 12

RAYA AND THE LAST DRAGON (rated PG)

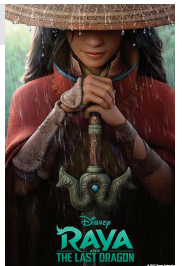
Blanchette Aquatic Facility

1900 Randolph, St. Charles, 63301

Doors open at 7:30P

Movie starts at 8:15P

Fee: \$8.50 per person, all ages





ADULT FITNESS

CHAIR YOGA

This class is built to promote fitness, posture and energy flow while allowing mobility in a gentle but supportive way. Activate your muscles and expand your limitations while remaining seated during class. This is a great yoga class for seniors.

6 WEEK PROGRAM | FEE: \$45 PER PERSON

Chairs and additional equipment provided. Bring a water bottle.

CODES	DAY	DATES	TIMES
WEBSTER PARK COMMUNITY BUILDING 2201 South River Road, St. Charles, 63303 CERTIFIED YOGA INSTRUCTOR: JANET SNYDER			
120113-05	TU	3/29 - 5/3	11:30A - 12:30P
120113-06	TU	5/10 - 6/14	11:30A - 12:30P
120113-07	TU	6/21 - 7/26	11:30A - 12:30P
120113-08	TU	8/2 - 9/6	11:30A - 12:30P

ACTIVE AGING (AGES 50+)

This program is designed for adults, ages 50 and older, to increase muscle strength, balance, flexibility and range of motion for daily activities. There will be some resistance equipment used as well as chairs for seated exercises and standing support.

6 WEEK PROGRAM | FEE: \$80 PER PERSON

Bring a water bottle and exercise mat.

CODES	DAYS	DATES	TIMES
WEBSTER PARK COMMUNITY BUILDING 2201 South River Road, St. Charles, 63303 LICENSED GROUP FITNESS INSTRUCTOR: DAWN BRADLEY			
235411-01	TU & TH	4/12 - 5/24 <i>No class 4/14</i>	10:10A - 11:10A
235411-02	TU & TH	6/7 - 7/14	10:10A - 11:10A
235411-03	TU & TH	7/26 - 9/1	10:10A - 11:10A

TAI CHI FITNESS

This program is designed to be a safe and effective exercise for a wide range of ages and conditions including arthritis. It uses the Sun Style of Tai Chi with its Qigong exercise to benefit balance, flexibility, mobility, coordination, management of arthritis and health in general.



6 WEEK PROGRAM

Bring a water bottle.

TAI CHI LEVEL 1: Designed for beginners or those in the early stages of practicing Tai Chi. No previous experience necessary.

TAI CHI LEVEL 2: For intermediate Tai Chi participants who have taken at least two sessions of Tai Chi Level 1.

CODES	DAYS	DATES	TIMES	FEES
WEBSTER PARK COMMUNITY BUILDING 2201 South River Road, St. Charles, 63303 LICENSED TAI CHI INSTRUCTOR: JOHN WILKERSON				
TAI CHI LEVEL 1				
235813-01	M & W	5/2 - 6/13 <i>No class 5/30</i>	9:15A - 10:00A	\$65
235813-02	M & W	6/27 - 8/8 <i>No class 7/4</i>	9:15A - 10:00A	\$65
235813-03	M & W	8/22 - 10/3 <i>No class 9/5</i>	9:15A - 10:00A	\$65
TAI CHI LEVEL 2				
245813-01	M & W	5/2 - 6/13 <i>No class 5/30</i>	10:15A - 11:15A	\$80
245813-02	M & W	6/27 - 8/8 <i>No class 7/4</i>	10:15A - 11:15A	\$80
245813-03	M & W	8/22 - 10/3 <i>No class 9/5</i>	10:15A - 11:15A	\$80

YOGA

This traditional yoga class will help you relieve stress, strengthen muscles and improve flexibility and balance. Yoga will allow you to harmonize your mind and body through various breathing techniques, postures and guided meditation.

6 WEEK PROGRAM | FEE: \$80 PER PERSON

Bring a water bottle and exercise mat.

CODES	DAYS	DATES	TIMES
WEBSTER PARK COMMUNITY BUILDING 2201 South River Road, St. Charles, 63303 LICENSED GROUP FITNESS INSTRUCTOR: DAWN BRADLEY			
231713-01	TU & TH	4/12 - 5/24 <i>No class 4/14</i>	9:00A - 10:00A
231713-02	TU & TH	4/12 - 5/24 <i>No class 4/14</i>	7:10P - 8:10P
231713-03	TU & TH	6/7 - 7/14	9:00A - 10:00A
231713-04	TU & TH	6/7 - 7/14	7:10P - 8:10P
231713-05	TU & TH	7/26 - 9/1	9:00A - 10:00A
231713-06	TU & TH	7/26 - 9/1	7:10P - 8:10P

CARDIO BOOT CAMP

This class is designed to target the entire body! With a combination of cardio exercises and strength training, you will strengthen your muscles and enhance agility. Everyone involved will work at their own pace towards the same goal, and that's to burn more calories!

6 WEEK PROGRAM | FEE: \$80 PER PERSON

Bring a water bottle.

CODES	DAYS	DATES	TIMES
WEBSTER PARK COMMUNITY BUILDING 2201 South River Road, St. Charles, 63303 LICENSED GROUP FITNESS INSTRUCTOR: DAWN BRADLEY			
220118-01	TU & TH	4/12 - 5/24 <i>No class 4/14</i>	6:00P - 7:00P
220118-02	TU & TH	6/7 - 7/14	6:00P - 7:00P
220118-03	TU & TH	7/26 - 9/1	6:00P - 7:00P

SSM CONNECTIONS

FIRE UP THE GRILL FOR A HEALTHY SUMMER WITH THESE HELPFUL TIPS!

Claire Goggins - SSM Dietitian

The sunny days of summer are ahead and that means hot temperatures and outdoor gatherings. Grilling is a popular cooking method used during the summer months and at these gatherings. Whether you're a "Weekend-Only Griller" or an "Every Day Grill Gourmet," beef up your food safety and nutrition with these helpful, hot-off-the-grill tips.



1. Go lean on the protein. Choose protein that is lower in saturated fat such as 90% or higher lean ground beef, lean cuts of beef or pork, and skinless poultry. Fish is also considered a lean protein. A great way to switch up the protein is to make burgers using ground turkey instead of beef.
2. Add vegetables. Adding vegetables, ensures that your meal will be packed with essential vitamins and minerals our bodies need. Vegetables may be grilled, roasted, or even served cold. You may drizzle with olive oil and season with herbs for added flavor.
3. Grill up dessert. Cook fruit kabobs, pineapple slices, or peach halves on low heat until slightly golden. Serve the fruit on top of low-fat yogurt.
4. Don't forget about food safety. Cross-contamination can occur when grilling by raw meat or unclean items. To help prevent this, use separate plates and utensils for uncooked and cooked foods. Using a food thermometer is the only way to make sure your grilled favorites are cooked to a safe temperature.
5. Look for ways to add physical activity to your gathering. Set up outdoor games such as washers, croquet, or volleyball.

Resources:

www.eatright.org/food/planning-and-prep/cooking-tips-and-trends/tips-for-a-healthy-cookout
www.eatright.org/homefoodsafety/four-steps/separate/the-rules-of-separation-at-the-grill



SSMHealth.





PARK HIGHLIGHTS

Each year the St. Charles Parks and Recreation Department's maintenance team works hard to make continuous improvements throughout the Parks. Here are just a few recent accomplishments and some upcoming projects they have planned.

For park visitors who like to fish, check out the new fishing dock in Kluesner Lake at Fountain Lakes Park that was installed in November 2021. Located just north of 370, Kluesner Lake is one of the most popular fishing spots in the City and the floating fishing dock provides a new vantage point for anglers. It extends out on a 45' bridge to an 18' x 12' covered platform offering easier access to a deeper section of the lake and a new area for regular anglers to fish.

With rentals being more popular than ever, our maintenance staff worked hard to provide upgrades to some of our rental facilities. At the Wapelhorst Aquatic Facility, visitors this summer will have the opportunity to rent out 4 new private party pavilions. The expanded patio space, 4 colorful shade canopies and additional picnic tables provide an upgrade for pool party reservations. Check out the new party area and make a splash for your next event. We've also added updates and improvements in Wapelhorst Park's Gould Building. These updates include new counters, cabinets, and appliances in the kitchen providing renters a more functional space.

The St. Charles Parks and Recreation Department was again awarded a Tree Resource Improvement and Maintenance (TRIM) grant from the Missouri

Department of Conservation (MDC). The TRIM grant will provide matching funds for the Department to continue managing the health of the urban forest and tree canopies within our Parks. For 2022, the TRIM funds will be used to focus on hazardous tree pruning and removals near high traffic areas, such as playgrounds, rental facilities, trails, and parking lots. The work completed through the grant will help supplement staff tree care with additional contracted support to accomplish the most difficult of tree care tasks. Thanks once again to MDC for their continued support and care toward the City's urban tree canopy.

After diagnosing a noticeable leak in the Braille Trail pond in McNair Park near the end of 2021, Parks Maintenance Staff worked diligently to safely remove fish, drain the pond, and remove built up sediment and debris from the basin. This clean-out allowed for the basin of the pond to be re-sealed in order to resolve the leaking issue. Now, the pond is filled back in and improvements have been made to help minimize future debris and sediment build-up as well as to provide a better water quality in the pond long-term.

Tennis courts at both Blanchette and McNair Park will receive updated surfacing and paint this year! This work involves removing and fixing any cracks or wear patterns in the existing court, followed by resurfacing and painting. The updates should improve surface playability and add a fresh look to each court.

This past January, our maintenance staff competed in

PARK HIGHLIGHTS

a regional Parks Maintenance Rodeo at the Family Arena hosted by the Missouri Parks and Recreation Association. Nine teams from municipalities in the region competed in 5 events including skid steer, zero-turn mower, backpack blower, truck and trailer, and irrigation operations. The City of St. Charles Parks and Recreation Department's team received 1st place in the backpack blower and irrigation competitions, as well as 3rd place in the skid steer and zero-turn mower competitions, garnering the team 1st place overall for the entire Rodeo! Congratulations to the team for putting their best foot forward and representing the City and the Department with pride!



WELCOME TO THE TEAM CHELSEY SUMME

Administrative Assistant III

Chelsey Summe first joined the St. Charles Parks and Recreation Department in June of 2021 as a part-time employee to the administrative team. In January of 2022 she was promoted to the full-time Administrative Assistant III position. Chelsey spent the last 5 years as a social worker in St. Louis City and County working with a diverse range of individuals, organizations and communities. Having been raised in the St. Charles area she is very knowledgeable of what St. Charles City has to offer including its parks. One of her favorite things to do is spend her free time out in nature, hiking and exploring all of Missouri's beautiful parks and trails. She is excited to join the team full-time and to work for a Department where she can combine her passion for helping others and her love for the outdoors.

PARKS PHOTO CONTEST - TAKE YOUR BEST SHOT!

We want to see St. Charles City Parks through your eyes. Share your park experience with us by entering our Parks Photo Contest. Photos submitted may be featured in future PLAY brochures or other promotional materials for the City of St. Charles Parks and Recreation Department. Whether your photo is from a day exploring a playground, making a splash at the pool, a beautiful scenic view in your favorite park or participation in one of our recreational programs or events, we want to see them!

This contest is open to all ages and skill levels. Photos submitted must be taken in a St. Charles City Park and need to be high resolution. To learn more about contest details, a list of City Parks and how you can participate, visit our website at www.stcharlesparks.com/parks-photo-contest

**PHOTO SUBMISSION DEADLINE:
MONDAY, MAY 2, 2022**

**WINNER WILL RECEIVE A
2022 AQUATIC SEASON PASS!**



2022 APRIL - AUGUST EVENTS

Mark your calendar for these upcoming events that are hosted within our Parks! For more information and updates please visit each organization's website listed below.



RACES

MAY 6

Frontier Park

THE FORCE 5K

Bridgeway Behavioral Health - www.bridgewaybh.com

MAY 7

Frontier Park

KAREN WEIDINGER FOUNDATION 5K

www.karensfoundation.org

MAY 14

Frontier Park

SPRING SPRINT 5K/10K

Bodies Race Company
runsignup.com/Race/MO/StCharles/SpringSprintStLouis

AUG. 7

Frontier Park

FLAT 5K

St. Charles Runners Club
www.fleetfeet.com/s/stlouis/flat-five

AUG. 13

St. Charles
Soccer Complex

KIWANIS CYCLING FOR CHILDREN

Kiwanis Club of St. Charles
www.stcharleskiwanis.com/Page/1486?event=160297

AUG. 13

Frontier Park

STRIDES FOR HOPE 5K

Infant Loss Resources - infantlossresources.org

EVENTS

APRIL 22

Memorial Hall in
Blanchette Park

OPTIMIST CLUB SPAGHETTI DINNER

<https://scoptimists.weebly.com/>

MAY 7

Kister Park Gazebo

MAIN STREET IN BLOOM

www.discoverstcharles.com/event/main-street-in-bloom/1278

MAY 7

Blanchette Park

IMMANUEL LUTHERAN PICNIC

www.immanuelstcharles.org

MAY 27 - 29

Frontier Park

MISSOURI RIVER IRISHFEST

<https://mrifsc.com>

JUNE - AUG.

Frontier Park

ST. CHARLES MUNICIPAL BAND

Every Thursday (excluding 8/18)
www.stcharlesband.com

JUNE - SEPT.

Frontier Park

ST. CHARLES BIG BAND

Sundays: 6/12, 7/10, 8/14, 9/4
www.stcharlesband.com/st-charles-big-band

JULY 2 - 4

Frontier Park

ST. CHARLES RIVERFEST

www.discoverstcharles.com/events/riverfest

AUG. 19 - 21

Frontier Park

FESTIVAL OF THE LITTLE HILLS

www.festivalofthelittlehills.com

STAFF SPOTLIGHT

JOHN PIKE - TRIP PLANNER

John joined the St. Charles Parks and Recreation Department in August of 2005 as our part-time Trip Planner. He has been creating unforgettable memories and experiences for our travelers for nearly 16 years! Before his time with us he worked for Trans World Airlines (TWA) for 34 years and American Airlines for 3 years where he retired from in 2004 at the age of 59. During his time with the airlines he became familiar with different vendors such as hotels, restaurants and attractions and gained knowledge on how they operated. John takes great pride in his work and is attentive to our traveler's wants and needs. His attention to detail for every excursion and activity is thoroughly orchestrated and thought-out, even down to knowing where the closest restrooms are for each stop along the way.

Our Trips Program averages 5-7 extended trips each year making it hard for him to choose a favorite but the 2016 Hawaii Escape is definitely high up on his list. The thing John loves most about his job is the interaction with the travelers, the people are his top priority! He really enjoys finding and planning those "hidden gems" that are less known or unexpected and seeing the traveler's "wow" reaction. With John's positive attitude and dedication, it's no wonder we have so many loyal travelers that keep coming back for what he has planned. We are lucky to have him on our team and appreciate all his hard work.





TRIPS PROGRAM

LIVE IN YOUR WORLD... TRAVEL IN OURS!

CARDINALS vs ROYALS IN KANSAS CITY

Root, root, root for our home team! We know how much our travelers love the St. Louis Cardinals so we will be taking a trip to Kansas City for a quick getaway to cheer them on as they take on the Royals at Kauffman Stadium.

- Charter bus transportation
- Attend two Cardinals vs Royals games at Kauffman Stadium
- Indulge in some delicious KC barbecue at Jack Stack BBQ
- Tour K.C. Strings where they make high-end string instruments
- Visit the GuitarLamp store where they make unique lamps out of instruments
- Enjoy dinner and stage show at The New Theatre & Restaurant
- Visit the Negro Leagues Baseball Museum
- Travel back in time to the 1800's at the Arabia Steamboat Museum
- Visit the Harry Truman Library Museum

MAY 3 - 6, 2022 (4 DAY TRIP)

Fee: \$875 per person (double occupancy)

Fee: \$1,085 per person (single occupancy)

Code: 142422-05

2023 EXTENDED TRIP MAILING LISTS

Here's a sneak peek at what we have planned for our 2023 Extended Trips. Sign up for each trip's mailing list so you receive information as it becomes available.

DOOR COUNTY & CRANBERRY COUNTRY

JUNE 14 - 21, 2023 Mailing List Code: 945312-47

THE HISTORY & BEAUTY OF MARYLAND

SEPT. / OCT. 2023 Mailing List Code: 945312-48

FLORIDA BEACHES & KENNEDY SPACE CENTER

Don't miss out on this unforgettable getaway to the sunny state of Florida. From an out-of-this world tour of the Kennedy Space Center to thrilling airboat swamp rides and beautiful beach cities to explore, we are sure there is something for everyone to enjoy!

- Charter bus transportation
- Tour the Carter House and the Carnton home, both historic sites that played important roles during the Civil War
- 2 night stay on the beach in Panama City, FL
- Airboat Swamp tour in Gator Country
- Dinner at Provino's Italian Restaurant
- 2 night stay on the beach in Daytona Beach, FL
- Plenty of time to enjoy each beach
- Tour Kennedy Space Center at Merritt Island, FL
- Visit quaint shops in Savannah Historic District
- Evening dinner cruise in Historic Savannah
- Back stage tour of Chick-fil-A World Headquarters
- Dinner at BRAVO! Italian Kitchen

SEPTEMBER 10 - 17, 2022 (8 DAY TRIP)

Fee: \$1,985 per person (double occupancy)

Fee: \$2,625 per person (single occupancy)

Code: 142422-02





ADULT CULTURAL

SPRING BLOOM TOUR

Please join our Park Horticulturist on a walk through Rau Garden and the surrounding areas in Blanchette Park to enjoy nature waking up from a long winter's nap. We will discuss what plants are blooming, what has just bloomed and what is about to bloom in the near future. We will answer questions you may have along the way as well. Please keep in mind this is a walking tour, comfortable shoes are recommended.

FRIDAY, APRIL 22

Rau Garden in Blanchette Park 1900 Randolph, St. Charles, 63301

Time: 10:00A - 11:00A

FREE for all ages! Registration is required.

Code: 332801-01

ARBOR DAY CELEBRATION

Join us as we celebrate the environment and all things tree at our annual Arbor Day Celebration. There will be a tree planting ceremony as well as free tree saplings to the first 100 people. Following the tree planting will be a Tree Identification Tour with our Park Horticulturist. Take a guided tour with our knowledgeable staff as we identify trees and answer any questions you may have along the way.

FRIDAY, APRIL 29

Shelter 1 in Blanchette Park 1900 Randolph, St. Charles, 63301

Begins at 10:00A | Tree Tour begins at 11:00A

FREE for all ages! Registration is only required for the Tree Identification Tour.

Tree Identification Tour Code: 332801-02

DID YOU KNOW?

The City of St. Charles Parks system has 136 different species of tree that have been identified. The broad diversity of tree species acts as a buffer against pests and disease while also providing habitat for a wide variety of birds and pollinators!

WILD FLOWER BIRD WATCHING TOUR

Join us for our Wildflower Bird Watching Tour at McNair Park to identify the different kinds of birds that venture into the area. Our Park Horticulturist will guide the tour and share information about the birds and wildflowers that you'll see along the way. Please keep in mind this is a walking tour, wearing comfortable shoes and bringing along binoculars is recommended.

MONDAY, MAY 2

McNair Park Shelter 4 3100 Droste, St. Charles, 63301

Time: 10:00A - 11:00A

FREE for all ages! Registration is required.

Code: 332802-02

CONTAINER GARDEN WORKSHOP

Are you interested in learning about container gardens? Then this workshop is for you! Our Park Horticulturist will begin the class with a presentation explaining the different ways to container garden from vegetables and herbs to decorative plant displays and other cultural requirements they may need. Participants will create their own decorative container gardens using summer ornamentals.

FRIDAY, MAY 6

Webster Park Community Building 2201 South River Road, St. Charles, 63303

Time: 9:00A - 10:00A

Fee: \$30 per person, all supplies included

Participants under the age of 16 must be accompanied by an adult.

Code: 132803-01

SSM SPEAKER SERIES - FOODS FOR BRAIN HEALTH



SSMHealth.

Feeling forgetful? It could be due to a number of reasons, diet being one of them. Join SSM Dietitian, Claire Goggins, for a luncheon to learn about foods that are important in supporting our memory and brain function as we age.

WEDNESDAY, JULY 13

Webster Park Community Building 2201 South River Road, St. Charles, 63303

Time: 12:00P - 1:00P

Fee: \$20 per person, healthy lunch included



DISCOUNTED THEME PARK PASSES

Discounted passes to Six Flags/Hurricane Harbor and Silver Dollar City can be purchased at our Administration Office. This ticket consignment program is made available to us through the Missouri Park and Recreation Association. Tickets are available through November, while supplies last. Visit our website for more information.

www.stcharlesparks.com/programs/six-flags-silver-dollar-city-tickets

SIX FLAGS - ST. LOUIS

Adult or Child One Day Pass

Adult or Child Season Pass



SILVER DOLLAR CITY - BRANSON

Adult or Child One Day Pass

Adult or Child Two Day Pass



LEARN TO RIDE

MOTORCYCLE TRAINING PROGRAM

Winner of the Motorcycle Safety Foundation's "Outstanding Community Training Site" Award

Our Basic Rider Courses use materials and techniques developed by the Motorcycle Safety Foundation and are ideal for both beginner and experienced riders. This 2-day course progresses from basic controls and riding skills to street strategies, special situations and accident avoidance maneuvers. Completion of this course eliminates the driving and written portion of obtaining your Missouri State motorcycle driver's license. Visit our website for more information including schedule, student requirements and required equipment.

www.stcharlesparks.com/programs/motorcycle-training

2 DAY COURSES (MARCH - NOVEMBER)

Weekday and weekend options available for M&TU, W&TH or S&SU.

Motorcycle Training Facility 2300 North Main Street, St. Charles, 63301

Ages: 15^{1/2} - Up

Students under the age of 18 must have their parents sign a waiver at the beginning of the first day.

Time: 8:00A - 5:00P (both days)

Classes begin promptly at 8:00A. No late entry allowed.

Fee: \$240 per person

Honda 250cc Nighthawks or equivalent, are provided during class.

Classes will be held, rain or shine.





ADULT SPORTS

FOR ALL LEAGUE PROGRAMS: Team registration only. Full payment is due at the time of registration. Communication including schedules and standings are sent to team managers via email or posted online.

SUMMER SLOW PITCH SOFTBALL LEAGUES

6 WEEK LEAGUE DOUBLEHEADERS WITH 1 BYE WEEK
SUNDAY LEAGUES ONLY - 5 WEEKS OF DOUBLEHEADERS

GUARANTEED 10 GAMES

Registration closes Friday, May 20

Tentatively starts the week of Sunday, June 5

MEN'S LEAGUE FEE: \$470

COED LEAGUE FEE: \$450

WOMEN'S LEAGUE FEE: \$460

EARLY BIRD DISCOUNT OF \$25 ENDS FRIDAY, APRIL 15

FALL SLOW PITCH SOFTBALL LEAGUES

6 WEEK LEAGUE DOUBLEHEADERS WITH 1 BYE WEEK
GUARANTEED 10 GAMES

Registration opens Monday, May 16

Registration closes Friday, August 5

Tentatively starts the week of Sunday, August 21

MEN'S LEAGUE FEE: \$470

COED LEAGUE FEE: \$450

EARLY BIRD DISCOUNT OF \$25 ENDS MONDAY, JUNE 20

CODES	DAY	DIVISIONS	MAX TEAMS
WAPELHORST PARK 1875 Muegge Road, St. Charles, 63303			
520101-01	M	Men	10
520104-01	M	Coed	10
520201-01	TU	Men	20
520301-01	W	Men	10
520304-01	W	Coed	10
520401-01	TH	Men	20
520701-01	SU	Men	18
520704-01	SU	Coed	6
MCNAIR PARK 3100 Droste Road, St. Charles, 63301			
510105-01	M	Women	8
KIWANIS PARK 3596 Elm Point Road, St. Charles, 63301			
510202-01	TU	Men	6

CODES	DAY	DIVISIONS	MAX TEAMS
WAPELHORST PARK 1875 Muegge Road, St. Charles, 63303			
530101-01	M	Men	10
530104-01	M	Coed	10
530201-01	TU	Men	20
530301-01	W	Men	10
530304-01	W	Coed	10
530401-01	TH	Men	20
530701-01	SU	Men	18
530704-01	SU	Coed	6

USSSA IS HIRING SOFTBALL UMPIRES!
FOR MORE INFORMATION PLEASE EMAIL UMPIRE IN CHIEF,
MIKE BOSCHERT: UMPINCHIEFMB@GMAIL.COM



FREE AGENT LISTS FOR ADULT SPORT LEAGUES

Free Agent Lists are posted on our website for teams that may be looking for a substitute player to fill in on their team. Individuals interested in being placed on a league's Free Agent List please submit your information online at www.stcharlesparks.com/programs/adult-sportsprograms

GOLF CLINIC (AGES 16 - UP)

We have teamed up with Cave Spring Golf Center to offer you this 4 week golf clinic. Instructors will cover grip, stance, putting, swing, chipping and pitching. This program is designed for all skill levels.

4 WEEK CLINIC

FEE: \$99 PER PERSON

Golf clubs are available to rent at no cost through Cave Spring Golf Center but are limited. Please bring your own if possible.

CODES	DAY	DATES	TIMES
CAVE SPRING GOLF CENTER 3650 West Clay Street, St. Charles, 63301			
130641-01	TU	4/5 - 4/26	6:30P - 7:30P

SAND VOLLEYBALL LEAGUES

Gather a few friends, form a team and serve up some fun in our Coed Sand Volleyball Leagues at Wapelhorst Park! Each team plays one match (3 sets) per evening.

7 WEEK LEAGUE

FEE: \$230 PER TEAM

Playoffs included.

CODES	DAY	DATES	TIMES
WAPELHORST PARK SAND VOLLEYBALL PITS 1875 Muegge Road, St. Charles, 63303			
231441-02	W	4/6 - 5/18	6:15P - 8:30P
231441-03	W	6/8 - 7/20	6:15P - 8:30P

PICKLEBALL LEAGUES (LEVELS 3.0 - 4.5)

Join our COED Pickleball Leagues for some outdoor friendly competition.

7 WEEK LEAGUE

FEE: \$80 PER TEAM

Playoffs included. Self-called, no referee.

CODES	DAY	DATES	TIMES
MCNAIR PARK DAY CAMP AREA COURTS 3200 Droste Road, St. Charles, 63301			
335714-01	TH	4/7 - 5/19	6:30P - 7:15P
335714-02	TH	6/9 - 7/21	6:30P - 7:15P

HORSESHOE LEAGUES

Leagues are COED and feature a handicap system and are non-sanctioned. Weekly updates of standings and statistics will be provided.

14 WEEK LEAGUE WITH OPTIONAL PLAYOFFS

FEE: \$200 PER TEAM

CODES	DAY	DATES	TIMES
BLANCHETTE PARK HORSESHOE PITS 1900 Randolph, St. Charles, 63301			
230701-01	TH	5/12 - 8/11	7:00P - 11:00P



TOURNAMENT

ST. CHARLES CLASSICS PICKLEBALL TOURNAMENT (LEVELS 3.0 - 4.5)

Join us for our annual St. Charles Classics Pickleball Tournament this summer at McNair Park! Whether you are a St. Charles City resident or not, all are welcome to sign up. The singles tournament will be held in the evening and doubles tournaments will begin in the morning, start times will vary based on registration. Schedules will be sent out to participants after registration closes. Participants must provide their own paddles. Registration will close out on Friday, May 20.

CODES	DAY	DATE	DIVISIONS	EARLY FEE	LATE FEE
MCNAIR PARK DAY CAMP AREA COURTS 3200 Droste Road, St. Charles, 63301				Registration after May 13	
541100-04	F	6/3	Men's - Single	\$25 per person	\$30 per person
541100-05	F	6/3	Women's - Single	\$25 per person	\$30 per person
541100-01	S	6/4	Men's - Doubles	\$40 per team	\$50 per team
541100-02	S	6/4	Women's - Doubles	\$40 per team	\$50 per team
541100-03	SU	6/5	Mixed - Doubles	\$40 per team	\$50 per team





YOUTH SPORTS

T-BALL SKILLS DRILLS (AGES 4 - 8)

Each week players will be divided up into small groups and go through a variety of skill drill stations. We'll focus on the basics while putting the FUN into *FUN*-damentals to help your player learn and sharpen their skills for the upcoming T-Ball season!

4 WEEK PROGRAM

FEE: \$50 PER PERSON

T-SHIRT INCLUDED. Bring your own glove and water bottle.

T-BALL INTRO (AGES 4 - 8)

This program will cover the basic skills of ball handling, batting, fielding and teamwork that will progress into 4 weeks of small game scrimmage. This program will emphasize individual skill development and teamwork while introducing game play.

6 WEEK PROGRAM FEE: \$75 PER PERSON

8 WEEK PROGRAM FEE: \$100 PER PERSON

T-SHIRT INCLUDED. Bring your own glove and water bottle.

CODES	AGES	DAY	DATES	TIMES
WAPELHORST PARK FIELDS 1 - 4 <small>1875 Muegge Road, St. Charles, 63303</small>				
111241-01	4-5	M	4/11 - 5/2	5:30P - 6:15P
111241-05	4-5	TU	4/12 - 5/3	5:30P - 6:15P
111241-03	4-5	W	4/13 - 5/4	5:30P - 6:15P
111241-02	6-8	M	4/11 - 5/2	5:30P - 6:15P
111241-06	6-8	TU	4/12 - 5/3	5:30P - 6:15P
111241-04	6-8	W	4/13 - 5/4	5:30P - 6:15P

CODES	AGES	DAY	DATES	TIMES
8 WEEK PROGRAM - WAPELHORST PARK FIELDS 1 - 4 <small>1875 Muegge Road, St. Charles, 63303</small>				
211241-01	4-5	TU	5/24 - 7/12	5:30P - 6:15P
211241-03	4-5	W	5/25 - 7/13	5:30P - 6:15P
211241-02	6-8	TU	5/24 - 7/12	5:30P - 6:15P
211241-04	6-8	W	5/25 - 7/13	5:30P - 6:15P
6 WEEK PROGRAM - WAPELHORST PARK FIELDS 1 - 4 <small>1875 Muegge Road, St. Charles, 63303</small>				
311241-01	4-5	W	8/10 - 9/14	5:30P - 6:15P
311241-02	6-8	W	8/10 - 9/14	5:30P - 6:15P

RAINOUT

Rainout Line

(636) 944-6001

rainoutline.com/search/dnis/6369446001

QUESTIONABLE WEATHER? KNOW BEFORE YOU GO!

Our rainout line simplifies the process of finding out about program cancellations and facility closings due to inclement weather conditions.

- **COMMUNICATION** for all programs is done via email. Please be sure to have an up-to-date email address on your household account when registering.
- **RAINOUT CANCELLATIONS** will be communicated via the Rainout Line. Rainout cancellations are made up at the end of the regularly scheduled program.
- **PERSONAL ABSENCES ARE FORFEITED.**



YOUTH SPORTS

BEGINNER TEAMS (AGES 5 - 7)

PREVIOUS T-BALL EXPERIENCE REQUIRED

Beginner Teams is designed to expand your child's individual and game skills learned in the T-Ball Intro session. All hitting will be from a T-stand. Schedules with final field assignments for practices and games will be provided.

6 WEEK PROGRAM FEE: \$75 PER PERSON

8 WEEK PROGRAM FEE: \$100 PER PERSON

T-SHIRT INCLUDED. Bring your own glove and water bottle.

CODES	AGES	DAY	DATES	TIMES
8 WEEK PROGRAM - KIWANIS PARK FIELD 1 - 2 3596 Elm Point Road, St. Charles, 63301 REGISTRATION CLOSING MONDAY, MAY 16 Practices scheduled: 5/23 and 6/6 Games scheduled: 6/13 - 7/25				
221242-01	5-7	M	5/23 - 7/25 No class 5/30 & 7/4	5:45P - 6:45P
6 WEEK PROGRAM - WAPELHORST PARK FIELDS 1 - 4 1875 Muegge Road, St. Charles, 63303 REGISTRATION CLOSING MONDAY, AUGUST 1 Practices scheduled: 8/9 and 8/16 Games scheduled: 8/23 - 9/13				
311242-01	5-7	TU	8/9 - 9/13	5:45P - 6:45P

COACH PITCH TEAMS (AGES 6 - 8)

PREVIOUS BEGINNER TEAMS EXPERIENCE REQUIRED

Coach Pitch is designed to expand on each player's game skills learned in Beginner Teams. Each time at bat, players will have the opportunity to hit an adult pitched ball. Schedules with final field assignments for practices and games will be provided.

6 WEEK PROGRAM FEE: \$75 PER PERSON

8 WEEK PROGRAM FEE: \$100 PER PERSON

T-SHIRT INCLUDED. Bring your own glove and water bottle.

CODES	AGES	DAY	DATES	TIMES
8 WEEK PROGRAM - KIWANIS PARK FIELD 1 - 2 3596 Elm Point Road, St. Charles, 63301 REGISTRATION CLOSING MONDAY, MAY 16 Practices scheduled: 5/26 and 6/2 Games scheduled: 6/9 - 7/14				
221243-01	6-8	TH	5/26 - 7/14	5:45P - 6:45P
6 WEEK PROGRAM - WAPELHORST PARK FIELDS 1 - 4 1875 Muegge Road, St. Charles, 63303 REGISTRATION CLOSING MONDAY, AUGUST 1 Practices scheduled: 8/9 and 8/16 Games scheduled: 8/23 - 9/13				
321241-01	6-8	TU	8/9 - 9/13	5:45P - 6:45P

NEW - RUGBY



We've teamed up with the St. Louis Royal Ramblers Rugby Club and the Warriors Youth & Rookie Rugby Club to offer a Youth Rugby program for children ages 5 - 12. This program will begin in June and take place at the St. Charles Soccer Complex.

Visit our website for more information or to register.

www.stcharlesparks.com/programs/youth-sport-programs



MULTI-SPORTS (AGES 4 - 8)

This program will introduce your child to T-ball, soccer and basketball. We will spend two weeks on each sport teaching the basic skills along with some small game scrimmaging. The focus is on FUN and giving children an opportunity to try out each sport to see which one they enjoy most.

6 WEEK PROGRAM | FEE: \$75 PER PERSON

T-SHIRT INCLUDED. Bring a water bottle.

CODES	AGES	DAY	DATES	TIMES
JAYCEE PARK FIELD 2805 Elm Street, St. Charles, 63301 MEMORIAL HALL AUDITORIUM - BLANCHETTE PARK 1900 Randolph, St. Charles, 63301				
320902-01	4-5	M	8/8 - 9/12	5:30P - 6:15P
320902-02	6-8	M	8/8 - 9/12	6:15P - 7:00P

OUTDOOR HOCKEY (AGES 4 - 8)

This program will introduce your child to hockey. They will develop skills like stick grip, puck handling, passing, shooting, stick checking and face-off. This instructional program will create a fun environment for learning and improving skills while progressing into small game scrimmage.

6 WEEK PROGRAM | FEE: \$75 PER PERSON

T-SHIRT INCLUDED. No skates, athletic shoes only. Bring a water bottle.

CODES	AGES	DAY	DATES	TIMES
MCAIR PARK IN-LINE HOCKEY RINK 3100 Droste, St. Charles, 63301				
310440-01	4-5	M	8/8 - 9/12	5:30P - 6:15P
310440-02	6-8	M	8/8 - 9/12	6:15P - 7:00P

CONNECT WITH US @STCPARKSPLAYMO



PLAY 25

YOUTH SPORTS

OUTDOOR SOCCER INTRO (AGES 4 - 8)

Soccer is the perfect sport to get your child active and engaged! Our focus is on participation and fun. Players will learn and develop the fundamental skills such as dribbling, passing, shooting and building coordination all while teaching them the importance of teamwork.

6 WEEK PROGRAM | FEE: \$75 PER PERSON

T-SHIRT INCLUDED. Bring a water bottle.

CODES	AGES	DAY	DATES	TIMES
ST. CHARLES SOCCER COMPLEX FIELD 1 3801 Mueller Road, St. Charles, 63301				
321041-01	4-5	TH	8/11 - 9/15	5:30P - 6:15P
321041-02	6-8	TH	8/11 - 9/15	6:15P - 7:00P



TAEKWON-DO (AGES 8 - UP)

This active program affiliated with the US-ITF teaches self-discipline, self-defense and builds self-esteem. It encourages the development of positive character traits such as courtesy, integrity, perseverance and self-control. This year-round program is offered in monthly sessions. New students are always welcome. To observe this program before registering please call Recreation Supervisor II, Oscar Rojas, at (636)255-6146.



4 WEEK PROGRAM | FEE: \$50 PER PERSON

Bring a water bottle.

CODES	DAY	DATES	TIMES
MEMORIAL HALL - BLANCHETTE PARK 1900 Randolph, St. Charles, 63301			
123501-04	TU	4/5 - 4/26	7:00P - 8:00P
123501-05	TU	5/3 - 5/24	7:00P - 8:00P
123501-06	TU	6/7 - 6/28	7:00P - 8:00P
223501-01	TU	7/5 - 7/26	7:00P - 8:00P
223501-02	TU	8/2 - 8/23	7:00P - 8:00P
323501-01	TU	9/6 - 9/27	7:00P - 8:00P

CORE SOCCER TRAINING PROGRAMS (AGES 2 - 18)

Develop your player's skills with us through these CORE Soccer Training Programs.



- **First Touch Playtime** - focus on developing motor skills with interactive games that teach the basic concepts of soccer
- **First Touch** - main focus is on balance, coordination with emphasis on the development of 1 v 1 moves, passing, receiving, dribbling and finishing
- **Ball Skills** - advance into ball mastery/dribbling, passing/receiving, attacking/defending, striking/finishing and group/game play
- **Goalkeeper** - focus is on technical development through footwork/balance, ball handling/boxing, diving/breakaways, shot stopping/crosses and angles/distribution

4 WEEK PROGRAMS

ST. CHARLES SOCCER COMPLEX 3801 Mueller Road, St. Charles, 63301

Bring a water bottle.



FIRST TOUCH PLAYTIME *Parent/guardian actively participate.*

AGES: 2-3	FEE: \$55 per person, per session		
DAY: Saturdays	TIME: 3:00P - 4:45P		
SESSIONS: 4/2 - 4/30 <small>No class 4/16</small>	5/14 - 6/4	7/9 - 7/30	8/6 - 8/27

FIRST TOUCH

AGES: 4-5	FEE: \$65 per person, per session		
DAY: Saturdays	TIME: 3:00P - 4:55P		
SESSIONS: 4/2 - 4/30 <small>No class 4/16</small>	5/14 - 6/4	7/9 - 7/30	8/6 - 8/27

BALL SKILLS

AGES: 6-18	FEE: \$75 per person, per session		
DAY: Saturdays	TIME: 4:00P - 5:55P		
SESSIONS: 4/2 - 4/30 <small>No class 4/16</small>	5/14 - 6/4	7/9 - 7/30	8/6 - 8/27

GOALKEEPER

AGES: 6-18	FEE: \$75 per person, per session		
DAY: Saturdays	TIME: 4:00P - 5:55P		
SESSIONS: 4/2 - 4/30 <small>No class 4/16</small>	5/14 - 6/4	7/9 - 7/30	8/6 - 8/27



TRAILS AND GREENWAYS

BLANCHETTE PARK

1900 Randolph, 63301

Paved Trail: .50 miles

BOONE'S LICK PARK

1000 Rosebrae Drive

Paved Trail: .29 miles

BOSCHERT GREENWAY

Begins at 3309 Kister Drive

Paved Trail: 4.15 miles

CENTENNIAL GREENWAY

Begins at 2320 S. Old Highway 94

Paved Trail: 2.7 miles

DUSABLE PARK

2006 N. Main Street

Paved Trail: .74 miles

Gravel Trail: 1.82 miles

Sand Trail: 1.08 miles

FOUNTAIN LAKES PARK

North Side: 630 Fountain Lakes Blvd. | South Side: 3750 Huster Road

Gravel/Natural Trail: 4.74 miles

FOX HILL PARK

3301 Kister Drive

Paved Trail: 1.45 miles

FRONTIER PARK

500 S. Riverside Drive

Paved Trail: .60 miles | Katy Trail: .47 miles

JAYCEE PARK

2805 Elm Street

Paved Trail: .45 miles

MCNAIR PARK

3100 Droste Road

Paved Trail: 1.75 miles

ST. CHARLES SOCCER COMPLEX

3801 Mueller Road

Paved Trail: 1.86 miles

SCHAEFER PARK

1647 Wilshire Valley Blvd.

Paved Trail: .46 miles

WAPELHORST PARK

1875 Muegge Road

Paved Trail: 2.04 miles

WEBSTER PARK

2201 S. River Road

Gravel Trail: .50 miles

PARK SAFETY

SAFETY IN THE PARKS

While out and about in the parks, our Ranger Division would like to remind you of a few safety tips and rules for everyone to have the most enjoyable experience.

- Do not leave valuables inside your vehicle in plain sight. Properly secure your belongings or leave them at home.
- Carry your cell phone or have a buddy join you while exercising in the parks.
- Speed limit in ALL parks is 15 mph, be vigilant and watch for pedestrians.
- Dogs are required to be on a leash at all times and owners are responsible for removing pet waste.
- No motorized vehicles, including golf carts, on trails, sidewalks or grass
- Please be sure all fires within a barbecue pit are extinguished prior to leaving.
- Please be courteous to other park visitors by picking up your litter and avoiding disruptive behavior.
- Keeping your cell phone close can not only save your life in an emergency, but also aid in saving the lives of others.

To report a suspicious person, activity or vehicle of concern, call the St. Charles Police/Ranger Dispatch at (636) 949-3300. We appreciate all eyes and ears within the parks and welcome comments. General observations can be made by calling the St. Charles Parks and Recreation Department's Administration Office at (636)949-3372. For immediate emergency response to report fire, medical emergency or a crime in progress, dial 9-1-1.





YOUTH CULTURAL

LITTLE SCIENTISTS (AGES 5 - 8)

This program is all about fun and learning while encouraging children to explore their curiosity and engage their creativity. Your little scientists will enjoy exciting, science-based classes where they will try experiments and put together different concoctions with hands-on activities.

4 WEEK PROGRAM

FEE: \$55 PER SCIENTIST - All materials provided.

CODES	AGES	DAY	DATES	TIMES
UPPER LEVEL KITCHEN OF MEMORIAL HALL - BLANCHETTE PARK 1900 Randolph, St. Charles, 63301				
THEME: WACKY WATER				
223245-01	5-8	M	4/18 - 5/9	5:30P - 6:15P
THEME: SUMMER SLIME				
223245-02	5-8	M	6/6 - 6/27	5:30P - 6:15P
THEME: SUPER SCIENCE				
223245-03	5-8	M	7/18 - 8/8	5:30P - 6:15P

LITTLE CHEFS (AGES 4 - 6)

Experience just how fun cooking can be with us during this hands-on program! Little chefs will have a blast exploring the culinary world as they help make two different recipes each week that are based around the session's theme. General cooking skills will be developed including safety in the kitchen.

4 WEEK PROGRAM

FEE: \$55 PER CHEF - All materials provided.

CODES	AGES	DAY	DATES	TIMES
UPPER LEVEL KITCHEN OF MEMORIAL HALL - BLANCHETTE PARK 1900 Randolph, St. Charles, 63301				
THEME: FIESTA FUN				
223244-01	4-6	TU	4/19 - 5/10	5:30P - 6:15P
THEME: SWEET SUMMERTIME				
223244-02	4-6	TU	6/7 - 6/28	5:30P - 6:15P
THEME: DINO DELECTABLES				
223244-03	4-6	TU	7/19 - 8/9	5:30P - 6:15P

POND LIFE EXPLORATION

Calling all explorers, join us as we learn about pond life. We'll focus on the aquatic ecosystems within our Parks and all of the life they support. Participants will learn about water collection, water quality and aquatic organisms as they search with skim nets and magnifying glasses in order to investigate what lives within our ponds. Learn about aquatic invertebrate identification as well as information about their life cycles, physical adaptations and what each critter can tell us about the water habitat.

FRIDAY, JUNE 10

Heatherbrook Park 130 Wildwood Court, St. Charles, 63303

Time: 9:00A - 10:00A

FREE for all ages! Registration is required.

Code: 332801-02

Please keep in mind this program takes place near the pond, clothing and shoes that are suitable to get wet are recommended.

MIGHTY TOTS TRIATHLON (AGES 3 - 8)

This recreational, noncompetitive event encourages children to get out and get active. All participants will receive a race number the day of the event as well as a medal when they cross the finish line! Helmets are required during the bicycle portion. Comfortable clothes that are suitable to get wet are preferred. *Parent/guardian participation is preferred with each mighty tot, if needed.*

SATURDAY, JULY 9 Rainout Makeup Date: July 30

St. Charles Soccer Complex 3801 Mueller Road, St. Charles, 63301

Fee: \$25 per mighty tot

Code: 332801-03

Times:	AGES 7 - 8	AGES 5 - 6	AGE 4	AGE 3
Check-in at	8:30A	8:45A	9:00A	9:15A
Start at	9:00A	9:15A	9:30A	9:45A



MERIT BADGE PROGRAM

The St. Charles Parks and Recreation Department now has Merit Badge Counselors on staff. If your scout is looking to work on a specific merit badge contact us to see how we can help them. Our counselors are trained in several merit badge categories like aquatics, family life and natural resources. Program times, dates and activities are dependent on staff and facility availability. If you are a scout looking for service hours or need help with rank advancements, we can also help with that. For more information please contact us at info@stcharlesparks.com



STORYTIME IN THE PARK

Join us for a literacy adventure with the St. Charles City-County Library during their free storytime series at Wapelhorst Park. Children and their family will enjoy the beautiful outdoors while practicing their active listening skills during storytime. Each date will feature different children's books that vary in length. Some participation may be encouraged through song and rhyme. We invite you to come early or stay late for some exploration and play at the playground. Seating will be available at the picnic tables underneath the pavilion. Guests are welcome to bring along a blanket, lawn chair and snacks.

FRIDAYS: 4/29 5/20 6/17 7/15 8/19 9/16 10/7

Wapelhorst Park Shelter 2 1875 Muegge Road, St. Charles, 63303

Time: 10:00A

FREE TO ATTEND. No registration required.

Storytime series are geared towards preschool children. Children should be accompanied by an adult.



St. Charles City-County
Library



STORYTIME

YOUTH CULTURAL



Our dance and gymnastic programs are a great way to introduce your child to the performing arts. Programs are designed to build your child's confidence and self-esteem through movements and music all while having healthy fun!

6 WEEK PROGRAMS
LOCATION: LOWER LEVEL 2 OF
MEMORIAL HALL IN BLANCHETTE PARK

1900 Randolph, St. Charles, 63301

FEE: \$75 PER GYMNAST/DANCER

*Athletic clothes are preferred.
 No shoes required during class.*

GYMNASTIC PROGRAMS:

Children will safely learn and practice balance, gross motor movement and coordination. Tumbling and small gymnastic equipment used.

FUTURE STARS (AGES 18 MO. - 3 YR.)

Parent/guardian actively participate in the class with their child.

CODES	DAY	DATES	TIMES
213401-01	M	5/2 - 6/13 <i>No class 5/30</i>	5:30P - 6:15P
213401-02	M	7/11 - 8/15	5:30P - 6:15P

BIG STARS (AGES 3 - 4)

This program continues to build on what was learned in our Future Stars program.

CODES	DAY	DATES	TIMES
213401-03	M	5/2 - 6/13 <i>No class 5/30</i>	6:20P - 7:05P
213401-04	M	7/11 - 8/15	6:20P - 7:05P

SCHOOL STARS (AGES 5 - 8)

This program continues to build on what was learned in our Big Stars program.

CODES	DAY	DATES	TIMES
213401-05	M	5/2 - 6/13 <i>No class 5/30</i>	7:10P - 7:55P
213401-06	M	7/11 - 8/15	7:10P - 7:55P

DANCE PROGRAMS:

Children will be introduced to dance techniques as well as improve coordination and flexibility while enjoying different types of music.

FUTURE HIP HOP STARS (AGES 3 - 6)

A beginner hip hop dance class for little ones that like music, dancing or just to move!

CODES	DAY	DATES	TIMES
213402-11	TU	5/3 - 6/7	5:30P - 6:15P
213402-12	TU	7/12 - 8/16	5:30P - 6:15P

HIP HOP STARS (AGES 7 - 10)

This class continues introducing your little dancer to this fun and fly dance genre.

CODES	DAY	DATES	TIMES
213402-13	TU	5/3 - 6/7	6:20P - 7:05P
213402-15	TU	7/12 - 8/16	6:20P - 7:05P
213402-14	TU	5/3 - 6/7	7:10P - 7:55P
213402-16	TU	7/12 - 8/16	7:10P - 7:55P



Share your photos with us! Check out our Photo Contest information on page 17. Submit your photos for a chance to win a 2022 Aquatic Season Pass.



YOUTH CAMPS

C.O.P.S. CAMP (AGES 9 - 14)

C.O.P.S. Camp is a joint project of the City of St. Charles Parks and Recreation Department's Ranger Division, Police Department and Fire Department. It is designed to provide children with the opportunity to learn about the duties of First Responders while teaching the importance of teamwork. This outdoor camp includes exciting and challenging events with the majority of the activities being physical in nature.



MONDAY, JULY 18 - FRIDAY, JULY 22

St. Charles Soccer Complex 3801 Mueller Road, St. Charles, 63301

Regular Camp Hours: 9:00A - 3:00P

Fee: \$165 per person City Resident Fee: \$145 per person

Two camp shirts and a drawstring bag are included in the price. Extra shirts can be purchased for an additional \$7 per shirt and must be ordered at the time of registration.

Before Care Hours: 7:00A - 9:00A

Fee: \$50 per person

After Care Hours: 3:00P - 5:30P

Fee: \$50 per person

Both Before AND After Care Fee: \$80 per person

REGISTRATION OPENS FRIDAY, MARCH 18 AT 8:00A.

MANDATORY PARENT MEETING

Parents/Guardians must sign up for one of the following dates when they register their child for camp.

WEDNESDAY, JUNE 1 OR TUESDAY, JUNE 7 AT 6:00P

Memorial Hall in Blanchette Park 1900 Randolph, St. Charles, 63301

INTERN PROGRAM (AGES 15 - 21)

Assist C.O.P.S. Camp Counselors and teams throughout the week. For those interested in signing up please contact Ranger Sergeant, Christina Braswell, at (636)949-3355 or email christina.braswell@stcharlesparks.com

CORE SOCCER SUMMER CAMPS (AGES 6 - 12)

FIELD PLAYER & GOAL KEEPER MORNING CAMPS

This camp is designed to help improve the player's technical skills while having fun. CORE is truly the next evolution of Soccer Camps with their series of "Technical Training Grids." During the week these grids help staff evaluate progress of player development. Each grid contains a different technical skill for the player to learn, understand and develop throughout the week. Each day we will introduce many challenging and exciting games related to these technical skills. We pride ourselves in being extremely organized and having top quality instructors with the most up-to-date coaching knowledge that enjoy teaching while having FUN with our campers.

4 DAY CAMP (MONDAY - THURSDAY)

St. Charles Soccer Complex 3801 Mueller Road, St. Charles, 63301

Session 1 Dates: June 13 - 16

Session 2 Dates: July 11 - 14

Time: 10:00A - 11:00A

Fee: \$95 per person, per session



REGISTER ONLINE AT
WWW.CORESOCCESTRANING.COM

CONNECT WITH US @STCPARKSPLAYMO



PLAY 31



SUMMER FUN DAY CAMP (AGES 6 - 14)

REGISTRATION OPENS FRIDAY, MARCH 11

Summer Fun Day Camp provides an entertaining environment for your child throughout the work week. Campers will make new friends while participating in different activities throughout the week such as: sports, cooking, swimming, crafts, field trips, games and much more! Your child will be supervised at all times with a counselor to camper ratio of 1:10. For field trips and pool times we use a ratio of 1:5. For more information or to view the Parent Manual, Weekly Camp Newsletters, and Consent Waiver Form visit our website.

CAMP LOCATIONS AND DROP-OFF / PICK-UP BUILDING

BLANCHETTE PARK - MEMORIAL HALL

1900 Randolph, St. Charles, 63301

WAPELHORST PARK - GOULD BUILDING

1875 Muegge Road, St. Charles, 63303

PRICING FOR CAMP REGULAR HOURS: 9:00A - 3:00P

See the next page for before and after care add-on options.

WEEKS 2 - 5 AND 7 - 11:

Regular Fee: \$165 per child, per week

City Resident Fee: \$145 per child, per week

SHORTENED WEEKS 1 AND 6:

Regular Fee: \$150 per child, per week

City Resident Fee: \$130 per child, per week

INITIAL REGISTRATION AND PAYMENT SCHEDULE

Week 1 (May 31 - June 3) and Week 2 (June 6 - 10) balances are due in full at the time of registration. For Weeks 3 - 11 a **\$50 non-refundable/non-transferable deposit** is required per child, per week in order to hold their spot. After the initial registration via phone you can log into your account online to make payments. The remaining balance of each week is due two weeks prior to the start date, example: Week 3 (June 13 - 17) final payment would be due Monday, May 30.

CAMP SCHEDULE

Week 1: 5/31 - 6/3

NO CAMP MAY 30

Week 2: 6/6 - 6/10

Week 3: 6/13 - 6/17

Week 4: 6/20 - 6/24

Week 5: 6/27 - 7/1

Week 6: 7/5 - 7/8

NO CAMP JULY 4

Week 7: 7/11 - 7/15

Week 8: 7/18 - 7/22

Week 9: 7/25 - 7/29

Week 10: 8/1 - 8/5

Week 11: 8/8 - 8/12

FIELD TRIPS

Subject to change, see website for updates.

Ages 6 - 9: Myseum

Ages 10 - 14: Great Skate

All Ages: St. Louis Zoo

All Ages: Rockin' Jump

All Ages: Swing Around Fun Town

All Ages: Bowlero

All Ages: Marcus St. Charles Cinema

All Ages: City Museum

All Ages: Kona Ice & STL Nerf Wars

Ages 6 - 11: Magic House

Ages 12 - 14: Float Trip

All Ages: Pool Swap

Blanchette Camp goes to Wapelhorst Aquatic Facility and Wapelhorst Camp goes to Blanchette Aquatic Facility

All Ages: Indian Camp Creek

PARENT OPEN HOUSE MEETING

Parents/Guardians can meet staff, ask questions or purchase extra camp shirts. One camp shirt is included in the initial registration. Extra shirts can be purchased for an additional \$7 per shirt.

Date: Sunday, May 22

Time: 4:00P

Location: Memorial Hall Auditorium in Blanchette Park

1900 Randolph, St. Charles, 63301

Each camper must have a completed Consent Waiver Form on file prior to their first day of camp.



SUNRISE AND/ SUNSET CAMP - ADD ON

ADD ON before and/or after care to your child's Summer Fun Day Camp schedule.

SUNRISE CAMP HOURS: 6:30A - 9:00A

SUNSET CAMP HOURS: 3:00P - 6:00P

PRICING FOR SUNRISE CAMP OR SUNSET CAMP

WEEKS 2 - 5 AND 7 - 11 FEE: \$50 per child, per week

SHORTENED WEEKS 1 AND 6 FEE: \$40 per child, per week

PRICING FOR SUNRISE CAMP AND SUNSET CAMP

WEEKS 2 - 5 AND 7 - 11 FEE: \$80 per child, per week

SHORTENED WEEKS 1 AND 6 FEE: \$70 per child, per week

SPLASH ZONE CAMP - ADD ON

ADD ON Splash Zone Camp to your child's regular Summer Fun Day Camp schedule so they can enjoy extra time at the pool. Camp Counselors will accompany those registered for Splash Zone Camp to the pool.

This camp is only available to those who are registered for the corresponding weeks of Summer Fun Day Camp.

AVAILABLE WEEKS 2 - 10 OF DAY CAMP

Camp Time: 3:00P - 6:00P

Swim Time: 3:30P - 5:30P Pick-up Time: 6:00P

Fee: \$ 75 per child, per week

Pick-up location for Blanchette Camp is Memorial Hall and Wapelhorst Camp is the Gould Building.

GROUP SWIM LESSONS - ADD ON

ADD ON 2 weeks of group swim lessons to your child's Summer Fun Day Camp schedule. These "add on" lessons are only available during the **Monday - Thursday, 9:40A sessions** at the Blanchette or Wapelhorst Aquatic Facilities. Camp counselors will accompany those registered for group swim lessons to the aquatic facility at their camp location. See page 9 for more information on group swim lessons.

CONNECTIONS

“They love getting to swim and go on field trips every week.”
- Van Dyne Family

Our kids have been going to the camp at Blanchette every summer since our oldest completed kindergarten. They love getting to swim and go on field trips every week. Every summer they look forward to seeing their counselors and friends they've made over the years. Last summer, all four kids went to camp. It was our youngest's first time getting to go and our oldest's last summer being able to go, since he has now aged out. We choose to send them to the Blanchette camp every summer because it's been a great program. They get to enjoy summer and be kids, while mom and dad have to work.





FORGET-ME-NOT PARK

FORGET-ME-NOT PARK - 150 S. MAIN STREET

Dedicated on November 23, 2021, this age-friendly pocket park rests along Historic Main Street and offers the perfect place for visitors to gather, rest, play a game of chess, eat lunch or enjoy the beautiful scenery. This park has been adopted for development and care by The Bev Roy Hope Foundation, a nonprofit organization whose mission, duty and purpose is to provide a Memory Café for those living with mild to moderate cognitive impairment. A Memory Café is a wonderfully welcoming place for individuals with Alzheimer's or any type of dementia or other brain disorder. It is a safe and comfortable space where caregivers and their loved ones can socialize, listen to music, play games, and enjoy the outdoors.

The St. Charles Parks and Recreation Foundation has donation opportunities available through personalized pavers at Forget-Me-Not Park. These donations are a personal and generous way to honor a loved one and contribute a lasting gift to the community.



DONATION OPPORTUNITIES

For more information about pavers and club level donations contact the St. Charles Parks and Recreation Foundation at (636)949-3372 or visit www.stcharlesparks.com/park/forget-me-not

PAVER DONATION

Personalized Paver (4" x 8")
Maximum 2 line inscription, up to 15 characters per line, including spaces.

AMOUNT

\$100

CLUB LEVELS

Purple Club

AMOUNT

\$2,501 - UP

Violet Club

\$1,501 - \$2,500

Lavender Club

\$300 - \$1,500

Contributions may be tax deductible.



DEDICATION CELEBRATION - NOVEMBER 23, 2021



ST. CHARLES PARKS AND RECREATION FOUNDATION

DEDICATED TO THE CONSERVATION, EDUCATION AND PRESERVATION OF OUR PARKS

The St. Charles Parks and Recreation Foundation was founded in 1984. This nonprofit organization supports the St. Charles Parks and Recreation Department through projects and endowment funds, capital improvements, park maintenance, land acquisition, beautification projects and scholarship funds for recreational programs and special events. Anyone can make a tax-deductible gift to the St. Charles Parks and Recreation Foundation. Gifts of any size are appreciated. There are several ways to give including the following:



- Benches
- The Gift of Trees
- Playground Fence Posts at Jaycee Park's Discovery Playground
- Personalized Pavers at Forget-Me-Not Park
- Personalized Pavers in Frontier Park by the Lewis and Clark Monument
- Scholarship Program

The Foundation also hosts special events that offer another way for you to show your support or contribute to their mission. Each year they hold a Bowling event in November and the Beer and Chicken Dance in January. Learn more about the St. Charles Parks and Recreation Foundation by visiting their website at: www.stcharlesparksfoundation.org



ADOPT-A-PARK PROGRAM

This program is designed to provide an opportunity for individuals, groups and businesses to show pride in their community by assisting Park staff with routine maintenance, clean up and beautification of parks, open spaces and trails. Tasks performed range from removing litter and debris, controlling weeds, caring for plants, mulching, raking leaves, identifying hazards, reporting vandalism and planting approved vegetation. An adoption sign with the person/group's name will be posted at the site adopted and will remain posted as long as the adopter is an active volunteer. Visit our website to learn more.

www.stcharlesparks.com/information/adopt-a-park

DON'T MISS OUT ON A PROGRAM OR EVENT YOU ARE INTERESTED IN, REGISTER TODAY!

- Registration can be made via phone, in-person or online
- Registration is taken on a first come, first serve basis
- Payment is due at the time of registration
- Registration is required unless otherwise stated
- Waitlists will be taken for sold out programs/events
- Programs with low registration are subject to cancellation with full refund
- Cancellations made outside of 14 days from the program start date will receive a refund minus a \$10 administrative fee (unless otherwise stated)
- Cancellations made within 14 days of the program start date will not receive a refund
- Personal absences are forfeited
- \$25 fee will be charged for return checks

ONLINE REGISTRATION

Visit www.stcharlesparks.com and click the "Programs" tab to find the activity you are interested in learning about. Once you are ready to register click the "Click Here" link to be directed to our online registration system. Here you can add the program to your cart where you will then be prompted to log in to your account. Please keep in mind online registrations are time sensitive, items in your cart will not be saved. Registration will be completed once payment is received. A receipt will be emailed, please review it carefully to make sure your transaction is accurate and complete. Should you have any problems please give our Administration Office a call at (636)949-3372.

Household Accounts: If you've made a facility reservation or participated in one of our programs before you already have a household account. If not, you will need to set up an account before you can register. New accounts will become active once verified by staff within 24 hours during the work week (M-F) or the first working day after a weekend or holiday.

REGISTRATION



FACILITY RENTALS

HOST YOUR EVENT AT THE PARKS! Whether you are planning a wedding, shower, birthday party, reunion, graduation party or company event, our facilities will meet your needs!

GOULD BUILDING IN WAPELHORST PARK 1875 Muegge Road, 63303

- Accommodates 100 guests
- Kitchen includes microwave, sink, stove and refrigerator
- Large deck space overlooking the lake

KATY DEPOT IN FRONTIER PARK 500 S. Riverside Drive, 63301

- Accommodates 49 guests
- Rental of the south end room only, north end room is not included
- Large deck space with views of the river
- Refrigerator available for use

WEBSTER PARK COMMUNITY BUILDING 2201 S. River Road, 63303

- Accommodates 75 guests
- Kitchen area equipped with refrigerator and sink only
- Large patio with fire pit (additional fees for fire pit apply, see website for more details)

MEMORIAL HALL IN BLANCHETTE PARK 1900 Randolph, 63301

Upper Level information:

- Accommodates 250 guests
- Includes large auditorium with hardwood floors and two small side rooms
- Large kitchen includes stove, large capacity refrigerator, double sink, keg tap, ice machine, plenty of counter space and a partition window that opens up to the auditorium
- Concession information and more rental options can be found on our website

Lower Level information:

- Accommodates 125 guests
- Includes one room with carpet flooring and a hardwood dance floor
- Large kitchen includes stove, large capacity refrigerator, double sink, keg tap, ice machine, plenty of counter space and a partition window that opens up to serve guests

For more information about these rentals including price, rental times, cancellation policies, rules and regulations or to check availability, please give our Administration Office a call or visit the website. Appointments to view the community buildings can be scheduled in advance.

(636) 949-3372 | www.stcharlesparks.com

GAZEBOS

Braille Trail Gazebo MCNAIR PARK - 3100 Droste Road, 63301

Eco Park Trailhead Gazebo DUSABLE PARK - 1802 N. Second Street, 63301

Kister Park Gazebo 408 S. Main Street, 63301

STAGE AND GARDEN

Jaycee Stage FRONTIER PARK - 500 S. Riverside Drive, 63301

Rau Garden BLANCHETTE PARK - 1900 Randolph, 63301



SHELTER RENTALS

SHELTER RESERVATION INFORMATION

- Reservations can be made between April 15 - October 31, 2022
- Reservations can be made via phone, in-person and online
- Reservations are made on a first come, first serve basis
- Full payment due at time of making the reservation
- A separate permit is required for inflatables, petting zoos, pony rides, food trucks, etc and obtained at least 3 weeks prior to function
- Rentals include a barbecue pit, additional tables and grills are available for an extra fee and must be reserved and paid for at least 14 days prior to function
- Rentals are rain or shine, no refunds will be given for inclement weather conditions or forecasts
- Cancellations made outside of 31 days from reservation date will receive a refund minus a \$10 administrative fee
- Cancellations made within 30 days of reservation date will not receive a refund
- Transfers can be made up to 30 days out from your reservation for an additional \$10 administrative fee
- \$25 will be charged for return checks

PARK	SHELTER	REGULAR	CITY RESIDENT
Blanchette	1 - 6 tables	\$150	\$75
	2 - 2 tables	\$100	\$50
	3 - 12 tables	\$150	\$75
	4 - 2 tables	\$100	\$50
Boone's Lick	1 - 2 tables	\$100	\$50
	2 - 2 tables	\$100	\$50
DuSable	1 - 3 tables	\$120	\$60
	2 - 6 tables	\$150	\$75
	3 - 6 tables	\$150	\$75
Frontier	1 - 6 tables	\$120	\$60
	2 - 6 tables	\$120	\$60
Heatherbrook	1 - 5 tables	\$120	\$60
Jaycee	1 - 8 tables	\$150	\$75
Kiwanis	1 - 4 tables	\$120	\$60
McNair	1 - 4 tables	\$120	\$60
	2 - 4 tables	\$120	\$60
	3 - 3 tables	\$100	\$50
	4 - 3 tables	\$100	\$50
Schaefer	1 - 6 tables	\$120	\$60
Vogt Brothers	1 - 6 tables	\$120	\$60
Wapelhorst	1 - 12 tables	\$150	\$75
	2 - 12 tables	\$150	\$75
	3 - 12 tables	\$150	\$75
Webster	1 - 4 tables	\$100	\$50
RENTALS ARE ALL DAY DURING PARK HOURS.			

ONLINE RESERVATIONS

FOR SHELTERS, GAZEBOs, STAGE AND GARDEN RENTALS

Visit www.stcharlesparks.com and click the "Log In" button when you are ready to make your reservation. If you've made a reservation or participated in one of our programs before then you already have a household account. If not, you will need to set up an account before you can reserve. New accounts will become active once verified by staff within 24 hours during the work week (M-F) or the first working day after a weekend or holiday. Please keep in mind online reservations are time sensitive and items in your cart will not be saved. Reservations will be completed once payment is received. A receipt will be emailed to you at this time, please review your receipt carefully to make sure your transaction is accurate and complete. Should you have any problems with online reservations give our Administration Office a call at (636)949-3372, we are happy to help!





SNEAK PEEKS

COMING SOON - NEW PLAYGROUND AT FOX HILL PARK

3400 KISTER DRIVE, ST. CHARLES, 63301

In 2022, Fox Hill Park will be receiving playground updates. The updates include removal of out-dated equipment and mulch surfacing, installation of new impact-absorbent rubber tile play surfacing, and the installation of new and additional play structures. The new play structures will include a bay of swings, a large play structure with slides and climbing activities for 5 to 12 year olds, and a smaller play structure for 2 to 5 years of age. Follow us on Facebook @STCParksPlayMO for more updates on this and other projects/events happening throughout the Parks.

FALL / WINTER PREVIEW

Here is a sneak peek of some of the exciting programs and events we have planned this fall and winter! More information will be available in our next PLAY brochure that will be out late July/early August.

Fall Hayrides - October

NEW: Family Camping Night - October

Screen on the Green FREE Movie Night - October

Trivia Night - November

Foundation's Bowling Event - November

Storytime with Santa - December

Candy Cane Hunt - December

Holiday Cookie Decorating Class - December

SEND US YOUR FEEDBACK

We appreciate hearing feedback about our programs, events, facilities, amenities and park safety. If you have any recommendations for ways in which we can improve please give us a call at (636)949-3372 or email info@stcharlesparks.com



REQUEST A SPEAKER

Is your company or school looking for a guest speaker for their next meeting or function? The St. Charles Parks and Recreation Department has experts in a variety of areas that can tailor a presentation to meet your needs.

Below are a few examples of different topics, but if you have something else in mind let us know! To request a speaker or learn more give us a call at (636)949-3372.

Overview of the Park System

Park Project Development

Park Maintenance

Horticulture

Park Safety

Aquatic Operations

Program and Event Planning

GENERAL INFORMATION

PROGRAM CANCELLATIONS

- IF CANCELLING 14 DAYS OR MORE prior to scheduled activity: Refund minus a \$10 administrative fee (unless otherwise stated)
- IF CANCELLING 14 DAYS OR LESS from scheduled activity: No refund
- PERSONAL ABSENCES ARE FORFEITED

IN CASE OF AN OOPS!

Complete details of a program's policies, procedures and guidelines are sometimes omitted from this brochure due to space limitations. Also, errors in days, times, registration requirements and fees may occur in the brochure. We thank you for your patience and understanding should these situations arise.

VOLUNTEERS MAKE A DIFFERENCE

Help improve your community by volunteering with the St. Charles Parks and Recreation Department. Volunteer individually or with a group/organization. Our Park Clean Up - Community Service Project is a great way to get involved! If you are interested in volunteering please visit our website to fill out the volunteer application.

www.stcharlesparks.com/information/volunteering

PARK PASSPORT CARDS

Park Passport Cards offer several discounts to participating city businesses, discounts for St. Charles Parks and Recreation Department programs and discounts on daily admission to our Aquatic Facilities. The card also gives you St. Peters resident rates to the Rec-Plex and their outdoor pools!

HOW TO REDEEM YOUR FREE CARD

This card is free and available to St. Charles CITY Residents only. To redeem your card you must visit our Administration Office in Blanchette Park with two proofs of residency. Bring in two of the following three types of ID with you: Driver's License with current address AND a current Tax Receipt OR current paid Utility Bill.

For more information visit www.stcharlesparks.com

NOTICE OF MEDIA USE

St. Charles Parks and Recreation (STCP&R) reserves the right, and may give permission to the media, to photograph classes, programs, and participants at any of our facilities and properties or any sponsored activity. Please be aware that these photos are for promotional purposes and may be used in future publication and media communications in any format.

If you do not wish to be photographed, please inform staff and we will make reasonable efforts to honor your request. If you see staff taking pictures, and you do not wish to be photographed, please let us know.

If you see a photo of yourself or a family member that causes you concern, please notify us. As a courtesy, we will make every reasonable effort to dispose of the image, and will not use it in future publications. However, we will not be able to retrieve, destroy or discontinue existing printed publications in which the photograph may have been included.

CONTACT US AT [INFO@STCHARLESPARKS.COM](mailto:info@stcharlesparks.com)

WE WELCOME PERSONS OF ALL ABILITIES

If you or a family member have a disability (of any variety, mild to severe, temporary or lifelong, diagnosed or suspected) and you would like to learn what we do to provide an "equally effective opportunity to participate" in our recreation programs, please give us a call. We will work with you to determine the specific needs of the individual wanting to participate and will put into place a plan for successful participation, based on those specific needs. Please let our Administration Office staff know of any accommodations needed at the time of registration. We look forward to getting to know you and working with you.

(636)949-3372 | info@stcharlesparks.com

SCHOLARSHIP PROGRAM

The St. Charles Parks and Recreation Foundation provides funds to either children or adult CITY RESIDENTS who cannot financially afford a recreation program or trip participation fee. One scholarship amount per family per scholarship period is granted. For more information call (636)949-3372 or visit

www.stcharlesparks.com/programs/scholarship-program

COMMUNITY ORGANIZATIONS

The following groups regularly host events or camps at Memorial Hall in Blanchette Park. Visit their websites to learn more about what they have to offer.

ACBL Bridge Tournaments

<https://tournaments.acbl.org/schedule.php?sanction=2001305>

Ambassadors of Harmony

(636)395-0150 | <https://aoh.org>

Community Living, Inc

www.communitylivingmo.org

Kiwanis Club of St. Charles

www.kiwanisofstcharles.org/

Optimist Club of St. Charles

<https://scoptimists.weebly.com/>

Wheeler's & Dealers Square Dance Club

<http://www.squaredancestcharles.com/>

YOUTH SPORTS ORGANIZATIONS

The following youth sport organizations offer athletic opportunities to residents that have aged out of our programs. Visit their websites or to learn more.

Missouri Youth Cricket Association (MYCA)

www.mocricket.org

St. Charles County Youth Soccer Association

(636)498-1056 | www.sccysa.org

St. Charles Jr. Baseball/Softball Association

www.scjbsa.org

St. Charles Titans Football

www.stcharlesfootball.com

PRSTD STD
U.S. POSTAGE
PAID
SAINT CHARLES
MISSOURI
PERMIT NO. 720



CITY OF ST. CHARLES
200 N. SECOND STREET
ST. CHARLES, MO 63301

POSTMASTER
PLEASE
DELIVER BY
MARCH 7, 2022



WE'RE HIRING

YOUR WORK MATTERS HERE!

Did you know each year the St. Charles Parks and Recreation Department hires more than 375 creative and customer service - friendly individuals?

We are currently hiring and looking for hardworking, dependable individuals to fill a variety of year-round positions. We hire anyone from retirees to college students, teachers on break and high school students. So if you are looking for a rewarding job that will keep you active then we have just the fit for you!

Working in our team environment can offer you a great opportunity to impact a child's life, contribute back to your community and build lasting relationships.

APPLY ONLINE TODAY!

Applicants must be 16 years or older by start date unless otherwise noted.

WWW.STCHARLESPARKS.COM/INFORMATION/JOB-OPPORTUNITIES

JOB OPPORTUNITIES

Aquatics Staff

- Lifeguards
- Swim Instructors

Concessions

- Event Bartender *(must be 21+)*
- Lead Concession *(must be 21+)*
- Concession Stand Workers

Fitness Instructors

Park Maintenance Staff

- Athletic Field Crew
- Janitorial Crew
- Landscaping Crew
- Mowing Crew

Park Rangers *(must be 21+ and Missouri POST Certified)*

Recreation Staff

- Cultural Arts Instructors
- Dance & Gymnastics Instructors
- Day Camp Counselors
- Softball Umpires/Sports Referees
- Youth Sports Instructors